

SOPAC SPREP GPA/UNEP PWA



SOPAC



Regional Meeting on Wastewater Management in the Pacific

Majuro, 10-15 October 2001

Programme Regional Meeting



- 1 Introduction
- 2 Case studies by experts / gaps identified
- 3 Guidance for Decision makers
- 4 Draft Policy Statement
- 5 Case studies by experts / lessons learned
- 6 Responses
- 7 Actions
- 8 Endorsement of Strategic Action Plan
- 9 Future scope on Wastewater

Documents



- 1. Provisional Agenda
- 2. Provisional List of Participants
- 3. Draft Policy Statement on Wastewater for Pacific Island Countries
- 4. Pacific Wastewater Strategic Action Plan Background Document
- 5. Guidance document on Municipal Wastewater (GPA)
- 6. A Directory of Environmentally Sound Technologies for the Integrated Management of Solid, Liquid and Hazardous Waste for Small Island Developing States (SIDS) in the Pacific Region (OPUS/UNEP)

Introduction



- Global Programme of Action (Cees van de Guchte)
- Pacific Programme of Action
- Wastewater Consultation Meetings
- Establishment of the Pacific SAP
- Regional Wastewater Meeting

Pacific Programme of Action



- Regional Programme of Action for GPA
Workshop Apia SPREP October 1999
- Pacific Overview on Land-based Pollutant Sources
 - UNEP Regional Seas Reports and Studies No. 174
- Wastewater indicated as Priority for Action
 - Regional Consultation Meetings Proposed by SPREP/SOPAC

Preparation for Consultation Meetings



Identification of Stakeholders in the Pacific:

- Governments Pacific Island Countries
- Pacific Water Utilities
- Regional and International Organisations (SPREP; SOPAC; WHO; SPC; GPA)
- Associations (NZWWA; AWA; PWA)
- Donor Agencies (ADB; WB; EU; NZODA; AUSAID)
- IETC; SPM; Greenpeace; WWF
- Hotels
- Industry

Wastewater Consultation Meetings



- Auckland February 2001
 - Establishment of Working Groups Pacific SAP
- Apia March 2001
 - Draft Pacific Strategic Action Plan
- Majuro October 2001
 - Endorsement of Draft Policy Statement
 - Development of the Strategic Action Plan
- First Intergovernmental Review Meeting GPA
Montreal November 2001
 - Implementation of the Global Programme of Action
 - Pacific Wastewater meeting

Structure of Strategic Action Plan

background document



- 1) Context (Pacific situation, definitions, linkages)
- 2) Goal of the Action Plan
- 3) Guidelines for Sustainability
- 4) Wastewater Management in the Pacific
- 5) Constraints and Responses
 - A) political will, regulations and compliance/enforcement, transparency
 - B) data, institutional, physical infrastructure, external influences
 - C) planning, human, natural and financial resources
 - D) public awareness, cultural, indigenous issues, gender aspects
- 6) Actions and Recommendations

Pacific Situation



- Pollution in the Pacific Ocean
- Global Initiatives
- Regional Recognition of the Need to Protect the Marine Environment

Definitions



- GPA defines land-based sources of marine pollution as: *Municipal, industrial or agricultural sources, both fixed and mobile, on land, discharges which reach the marine environment from outfalls and runoff, through rivers and canals and via the atmosphere.*
- Wastewater in the Pacific SAP includes: *liquid, human and industrial waste and stormwater (runoff caused by rainfall) in rural as well as urban areas.*

Linkages



- Waste management (SPREP, MARPOL/PACPOL)
- Oceans (IOC, Ocean Charter; CROP, Oceans policy)
- Coral reefs (ICRI)
- Climate Change (SPREP, PICCAP)

Goal Pacific SAP



- ***“To ensure that wastewater discharges within the Pacific are managed sustainably, and without adverse effects on our natural resources.”***

Guidelines for Sustainability



Guidance for decision-makers:

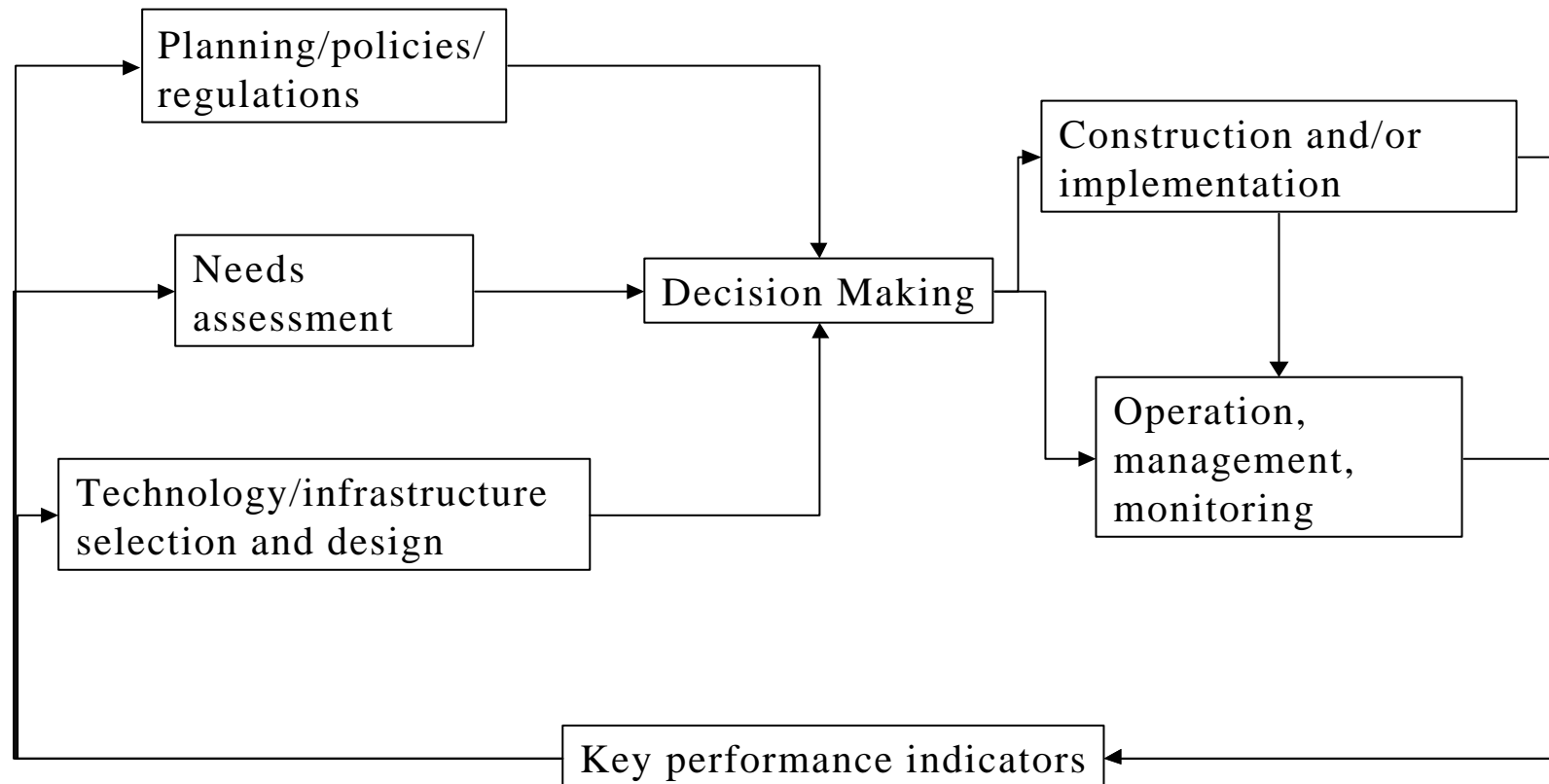
- Institutional Arrangements
- Advocacy and Public Awareness
- Financing Options
- Selection of Technology

Wastewater Management in the Pacific



- National Decision Making
- Planning Policy and Regulation
- Needs Assessment
- Technology, Infrastructure, Selection and Design
- Construction and Implementation
- Operation Management and Monitoring

Wastewater Management Processes and Inputs



Constraints and Responses



- A) political will, regulations and compliance/enforcement, transparency
- B) data, institutional, physical infrastructure, external influences
- C) planning, human, natural and financial resources
- D) public awareness, cultural, indigenous issues, gender aspects

Actions and Recommendations



- Pacific input toward International Action
- National and Regional Actions
- Local Actions

Regional Wastewater Meeting



Goals:

- Finalise Policy Statement
 - 4 Guiding principles
 - | Policy and Regulations
 - | Institutions, Infrastructure and Information
 - | Human, Natural and Financial Resources
 - | Awareness and Socio-Cultural issues
 - Policies
 - Strategies
- Finalise Strategic Action Plan

Future scope on Wastewater



October 2001

- Policy Statement endorsed
- GPA/UNEP Guidance document Pacific annex
- Strategic Action Plan endorsed

November 2001

- Montreal GPA Review meeting

2002 – 2006?

- Implementation of the Pacific SAP
- Demonstration Projects



Success!