



FLYER | 1806



Knowledgebase for Lessons Learned and Best Practices in the Management of Coral Reefs

The project seeks to formalize the experiences, lessons learned from previous GEF projects, as well as major non-GEF initiatives, involving coral reefs and associated ecosystems. The project aims to identify, analyze, and translate lessons into good practices and information resources, and then disseminate this information globally for use in future project design and development.

The GEF Lessons Learned and Best Practices Toolkit (GEF LL Toolkit) is the place to find information about how to design and implement coral reef management strategies. This toolkit is a “living knowledgebase” - as our knowledge of the issues surrounding coral reef management and how best to approach them improves, revisions of this information can be anticipated.

The GEF LL Toolkit is available on-line at <http://gefll.reefbase.org>, and updates will be provided on a quarterly basis to provide the latest information available on coral reef management issues. The tools provided on this website are also available through an interactive CD-ROM. It also available online are an email listserv (<http://lists.reefbase.org/mailman/listinfo/lessons.learned>) and a weblog space for coral reef managers to discuss their ideas and experiences.

The GEF LL Toolkit is comprised of eight extensive issue streams, each of which are high priorities in coral reef management:

- Project Design
- Project Management
- Community Participation
- Partnerships & Linkages
- Policy, Legislation & Enforcement
- Ecosystem-based Management
- Monitoring & Evaluation of Coral Reef Management
- Capacity, Education & Knowledge Management

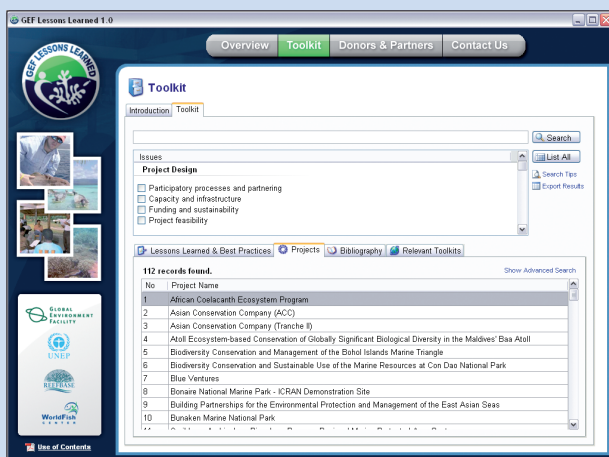


GEF Lessons Learned website

We are very excited to be launching this CD and website and hope that you will find it useful. If you find information that is out-of-date or notice we are missing a critical piece, please feel free to contact us at reefbase@cgiar.org so that we can continue to provide the most current and useful information to coral reef managers.



GEF Lessons Learned CD



GEF Lessons Learned Toolkit

Development and Protection of the Coastal and Marine Environment in Sub-Saharan Africa	
General Info Key Lessons Learned Documents	
Project Name	Development and Protection of the Coastal and Marine Environment in Sub-Saharan Africa
Region	Africa
Country	Regional
Focal Area	International Waters
Agency	UNEP
Project Type	Medium Size Project
Funding (Million USD)	0.75
Project Stage	CEO Approved
Status	ongoing
Project Summary	This project involved a large number of consultants (87) writing country reports for eleven government in Sub-Saharan Africa to develop priorities for coastal and marine environment in these countries that would feed into the African and NEPAD processes for environmental planning. The project was conceptualized at the Pan-African conference on Sustainable Integrated Coastal Management in Maputo in 1998 and was completed in 2002. The overall goal of the project was the identification of hot spots and sensitive areas as well as in the application of a causal chain analysis to establish the root causes for environmental degradation, depletion of resources and loss of biodiversity. The project was different from many GEF projects in that it did not implement any country or site-based activities, but was a large-scale planning and proposal development process. The results depended on the effectiveness of the consultants to identify the main key ecosystems and environmental
Issues	Participatory processes and partnering, Planning
GEF Project	Yes
Full Review	Yes
Contacts	

This project has been funded by the Global Environment Facility (GEF) and the United Nations Environment Programme (UNEP).



The project is carried out in partnership with International Waters Learning Exchange and Resource Network (IW:Learn), The Nature Conservancy (TNC), World Wildlife Fund (WWF), Conservation International (CI), Reef Check, International Coral Reef Action Network (ICRAN), Global Coral Reef Monitoring Network (GCRMN), National Oceanic and Atmospheric Administration (NOAA).



ReefBase Project The WorldFish Center

PO Box 500 GPO, 10670 Penang, Malaysia
Tel: +(60-4) 626 1606 Fax: +(60-4) 626 5530
Email: reefbase@cgiar.org

ReefBase website: <http://www.reefbase.org>
GEF LL website: <http://gefll.reefbase.org>

© 2008 The WorldFish Center

All rights reserved. This flyer may be reproduced without the permission of, but with acknowledgment to, The WorldFish Center.



WorldFish
Supported by the CGIAR