

Tools and Technology

Presenter:

Khristine Custodio Gudczinski

GEF IW:LEARN

“Collect data *once* and *use* it *many times* in many ways.”





Open Source

a software that can be modified and shared because its design is publicly accessible. Its authors make its **source code available** to others who would like to view that code, copy it, learn from it, **alter** it, or share it.

<https://opensource.com/resources/what-open-source>

Open Data

is data that can be freely used, shared and built-on by anyone, anywhere, for any purpose, and usable when made available in a common, machine-readable format.

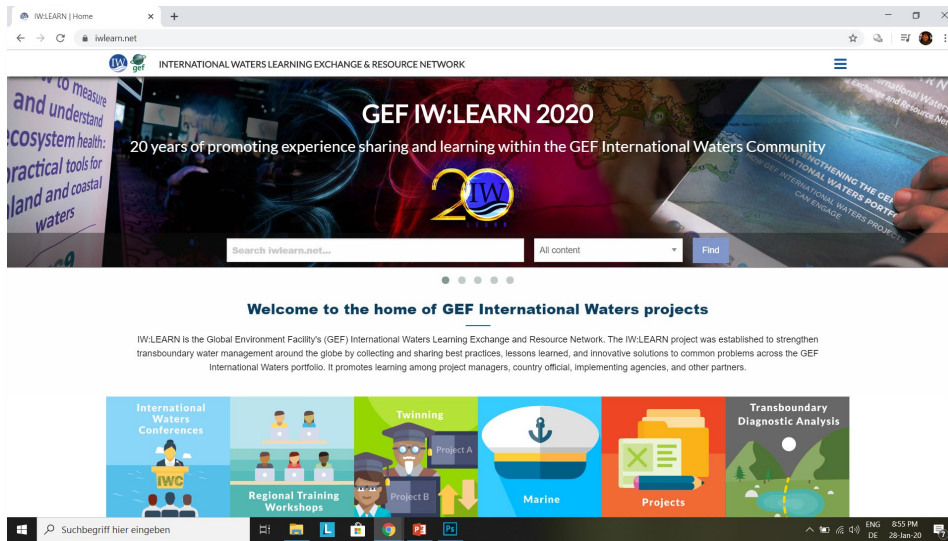
Open data must be licensed. Its license, e.g., Creative Commons, must permit people to use the data in any way they want, including transforming, combining and sharing it with others, even commercially.

Open Framework

technology interoperability standards that define the boundaries between two objects that have been put through a recognized consensus process. An example would be being able to view PDF in various software (Adobe, IE, Chrome, etc.) or use a 3.5mm earphone with most mobile phones.

IW:LEARN DIM Tools

iwlearn.net



Project output archiving (almost 15 years) – website, publications, reports, presentations, etc.

Manuals, MOOCs, Toolkits – on various IWRM topics both for freshwater and marine

GEF IW Project Database – individual profile for each project showcasing project information, contacts and outputs

Newsletter – featuring GEF IW projects and IW:LEARN milestones and activities, distributed to 2,000+ subscribers

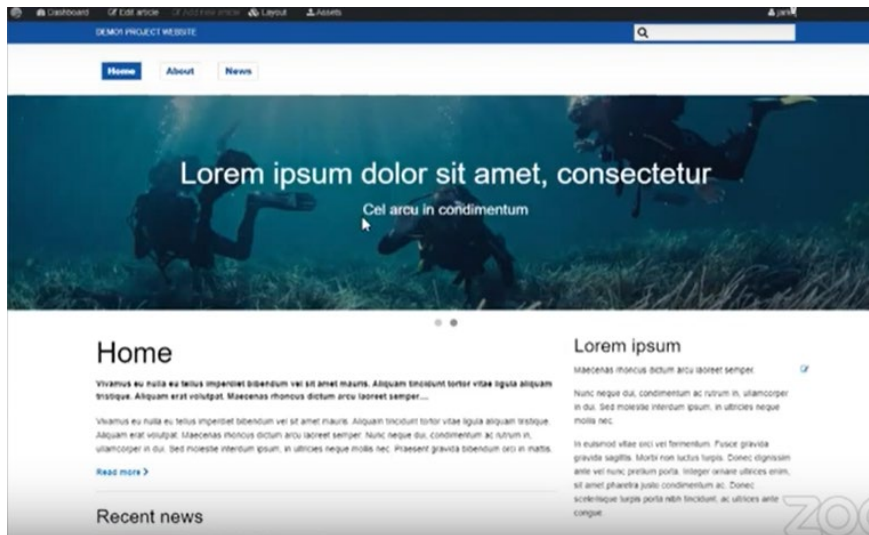
IW:LEARN events – Twinning, trainings and workshops, International Waters Conferences (IWC)

and a whole lot more!

IW:LEARN DIM Tools

Website Toolkit

<http://iwlearn.net/learning/toolkits>



- Assistance in website development, hosting
- Assistance in developing and deploying tools such as GIS and infographics
- Web archiving in the IW:LEARN server at project closure

Toolkit technical details

Microsoft .NET (Server side)

Angular (Client side, JavaScript framework)

Zurb Foundation (Outer visual layer, responsive design)

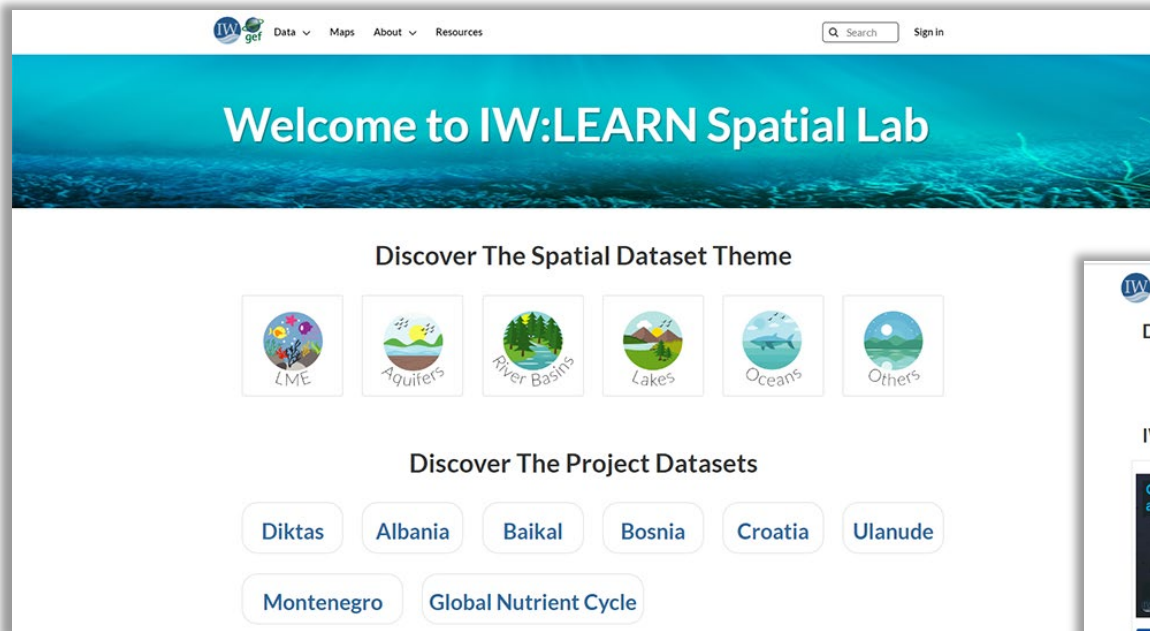


IW:LEARN DIM Tools

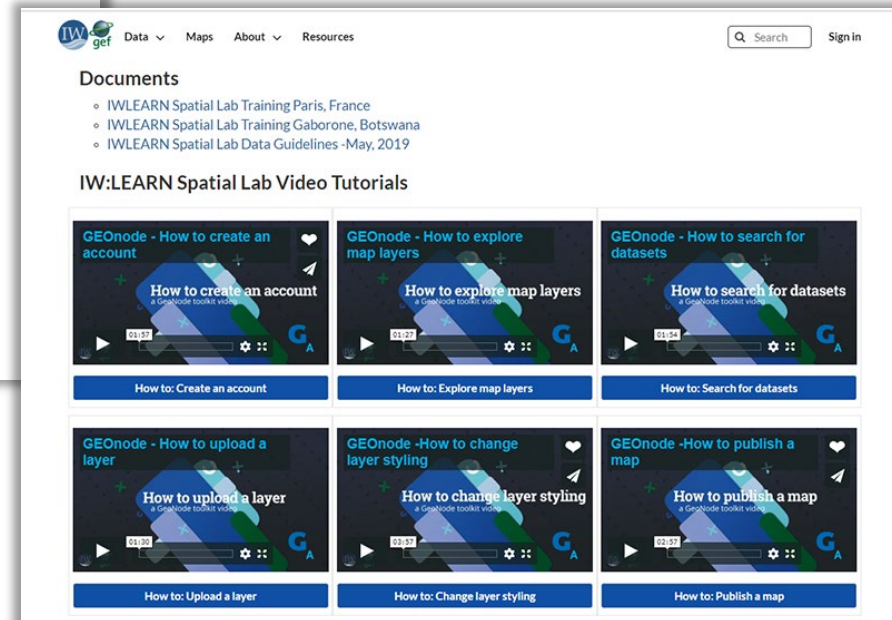
Geospatial Lab (Geonode)

<http://geonode.iwlearn.org>

<http://geonode.iwlearn.org/toolkit/tutorial>

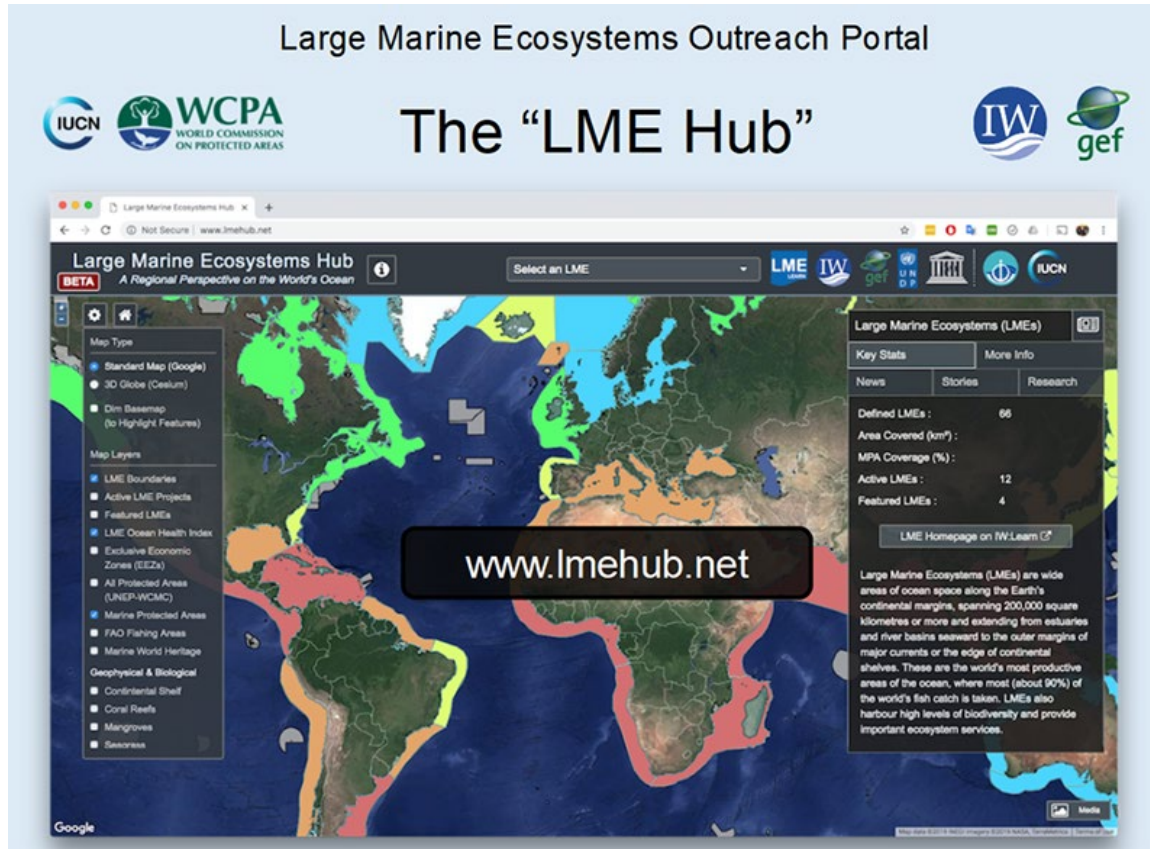


Free web-based GIS data hosting and publishing system provided by IW:LEARN to GEF IW projects and partners



IW:LEARN DIM Tools

LME Hub <http://lmehub.net>



- Efforts ongoing to identify and integrate relevant data, sources and content
- Humpback whale story launched in GoogleVoyager (June 2018) – whale shark integration (CLME+)
- Further engagement with LME partners needed

[Presentation at the Paris DIM workshop](#)

IW:LEARN LME Project Management Tool

LME Scorecard

<http://iwlearn.net/manuals/lme-scorecard>

STRUCTURE OF THE SCORECARD

1. LME Data Sheet
2. LME modules indicators
3. Assessment Results
4. Priority actions
5. Multi Country Average Results

Anchor framework that will link stakeholder engagement toolkit, capacity development planning guide and other LME tools

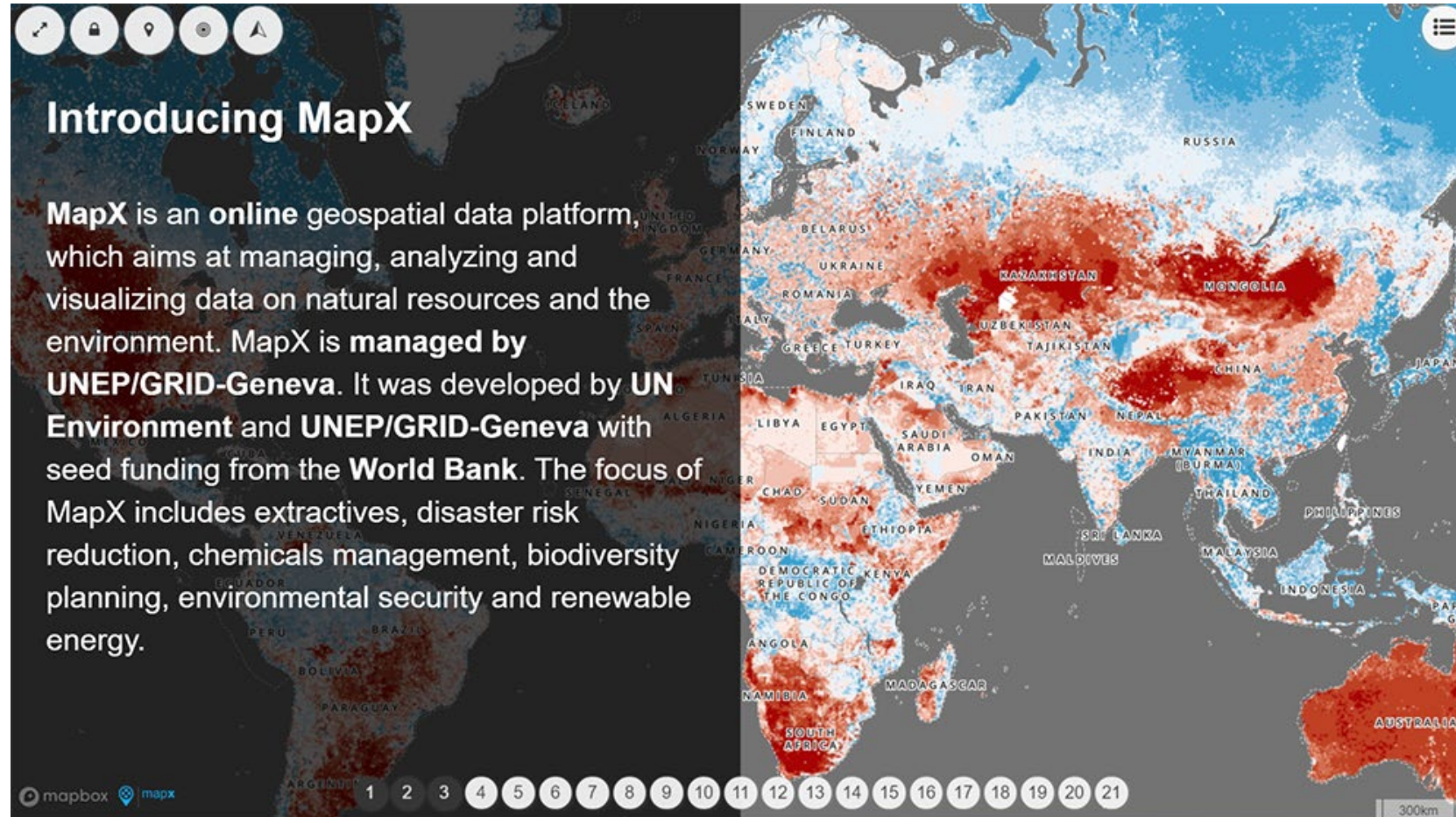


- Efforts ongoing to identify and integrate relevant data, sources and content
- Humpback whale story launched in GoogleVoyager (June 2018) – whale shark integration (CLME+)
- Further engagement with LME partners needed

[Presentation at the Paris DIM workshop](#)

GRID Geneva's StoryMap / MapX

[Overview of MapX online](#)



[Presentations from the Paris DIM Workshop:
Telling your stories with data and visuals](#) / [An introduction to MapX](#)