

Strengthening regional ocean governance in ABNJ



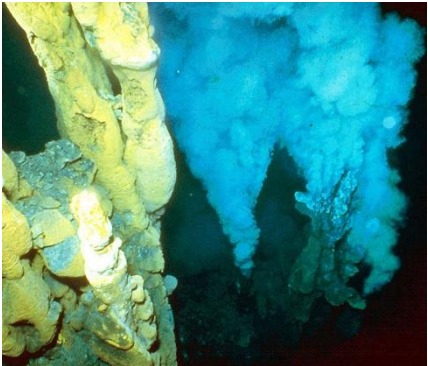
Hannah Thomas

Senior Programme Officer, Marine Programme, UNEP-WCMC

Why do we need to strengthen ABNJ governance?

Ecosystem Approach

Unique, vulnerable and unprotected biodiversity



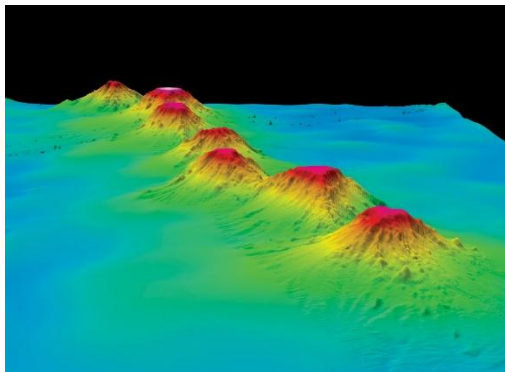
Benefits provided by connected ecosystems



Conflict between human activities

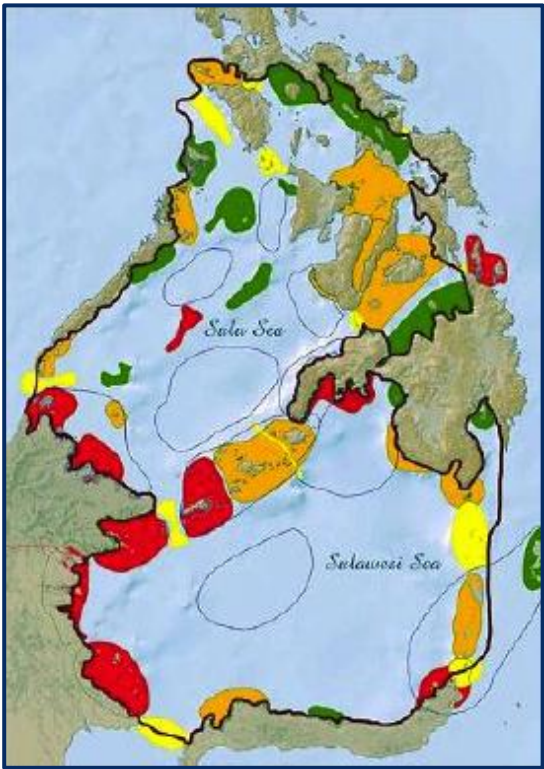


New opportunities for blue growth

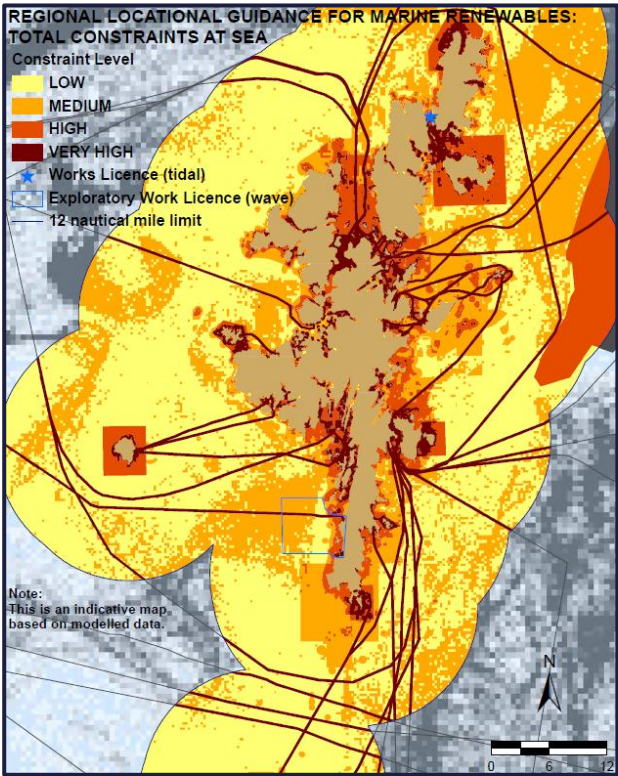


Cross-sectoral area-based planning to deliver the ecosystem approach

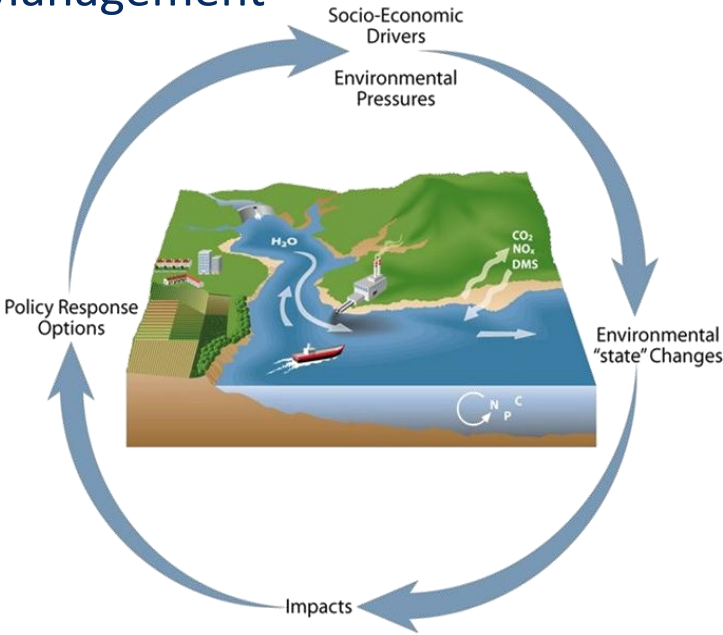
MPA network planning



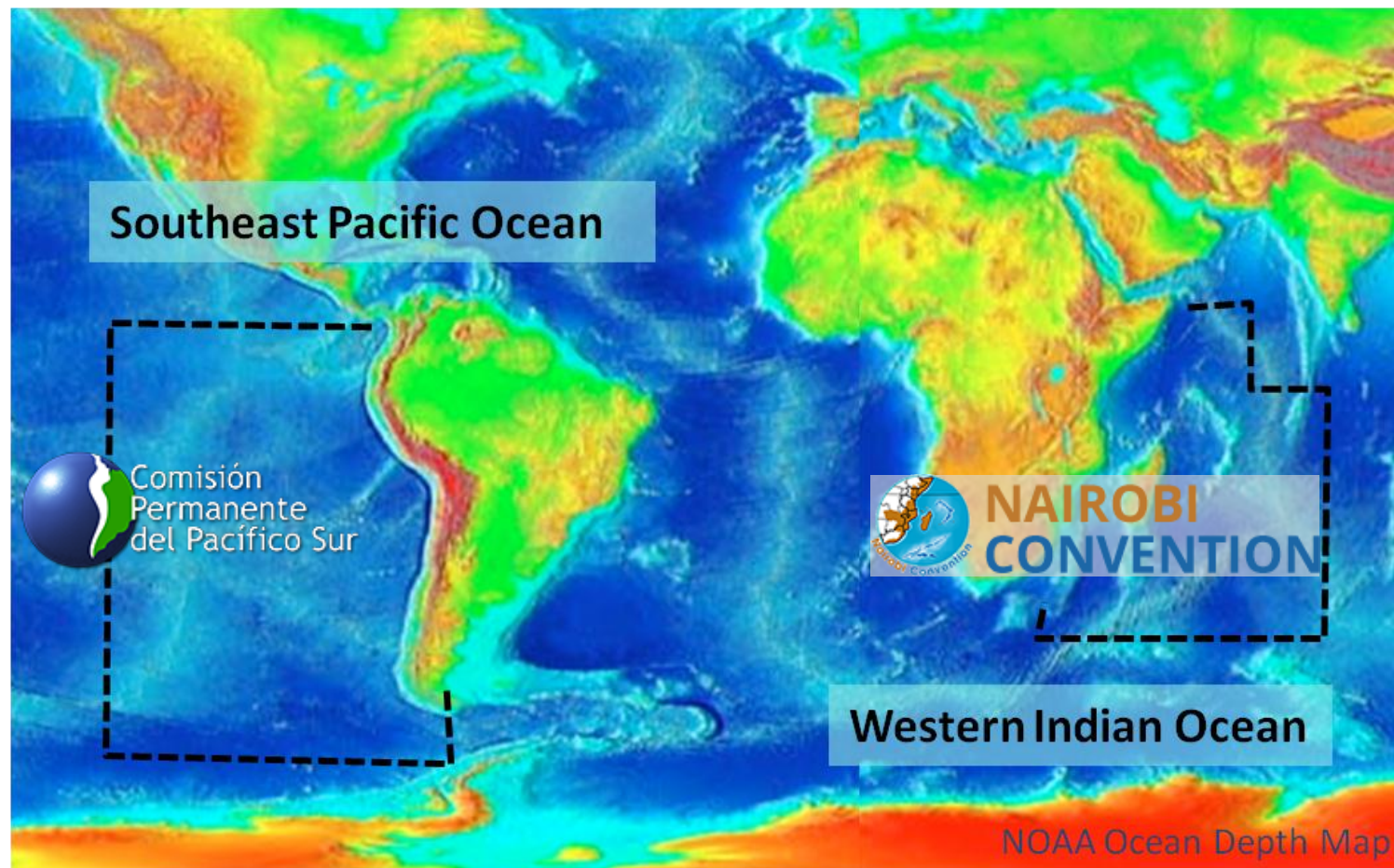
Marine Spatial Planning



Integrated Coastal Zone Management



What do we need to catalyse cross-sectoral area-based planning in ABNJ?



Food and Agriculture
Organization of the
United Nations



ABNJ Deep Seas Project



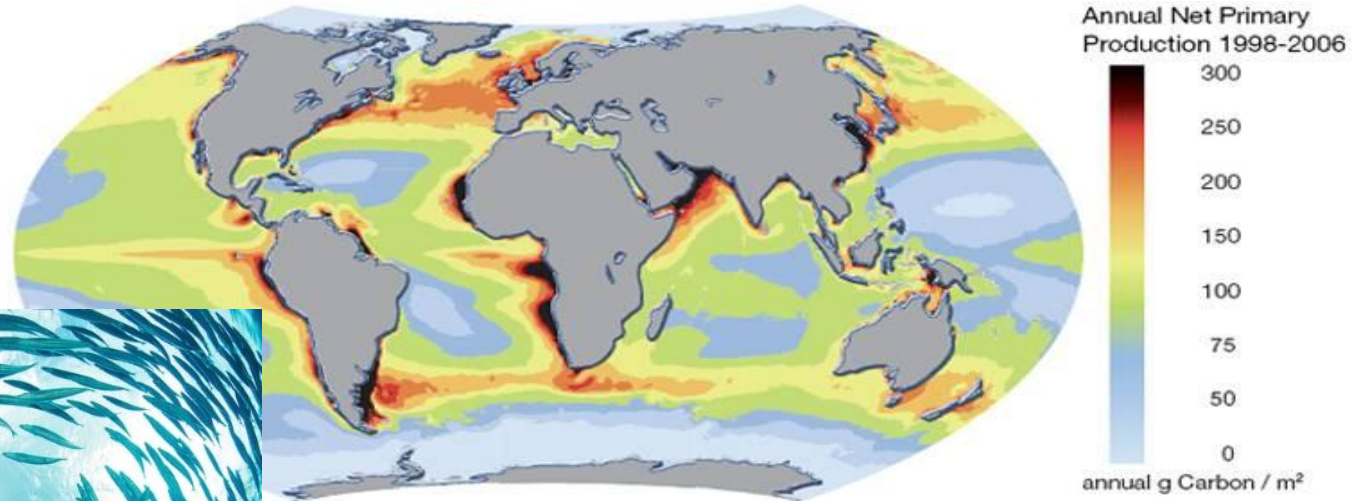
WCMC

What do we need to catalyse cross-sectoral area-based planning in ABNJ?

1) Make the case for addressing ABNJ

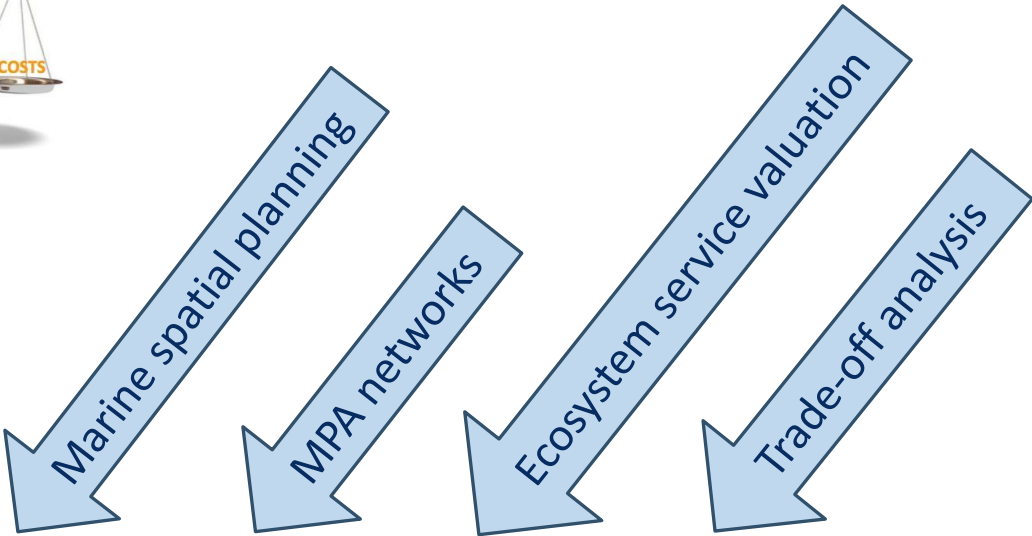
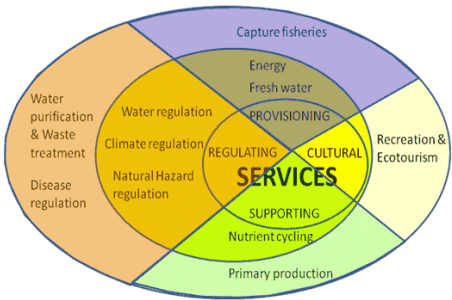
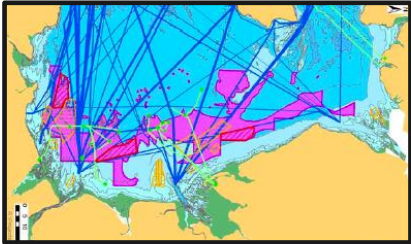
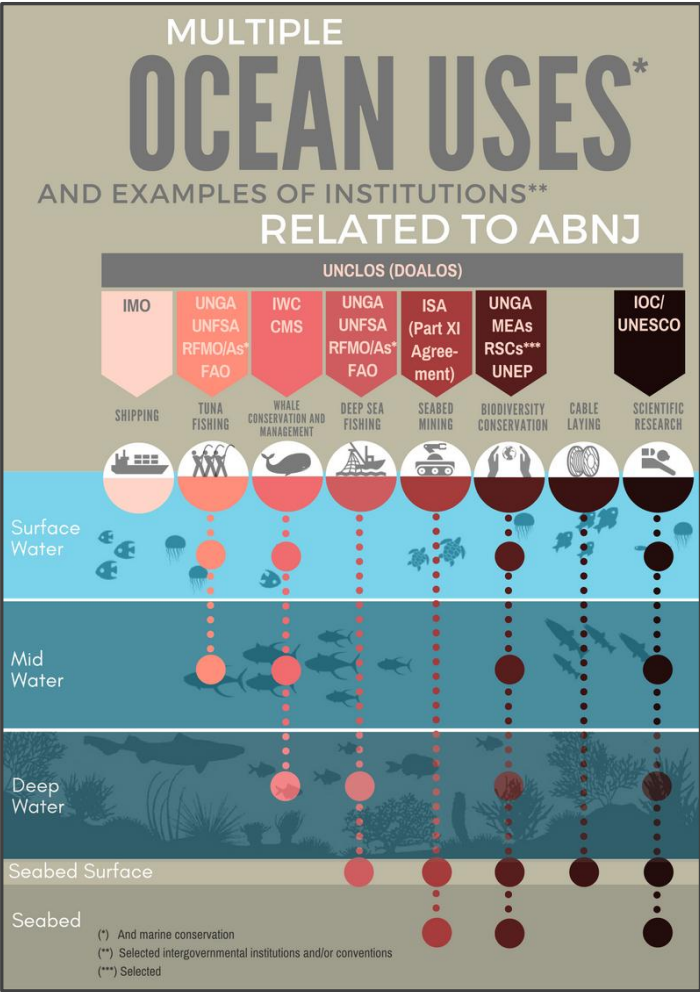


Transboundary
connectivity



What do we need to catalyse cross-sectoral area-based planning in ABNJ?

2) Understand which approaches are suitable for the specific governance contexts



Legal Framework	☹️	☹️	😊	😊
Data	😊	☹️	☹️	☹️
Compliance	😊	😊	n/a	n/a

What do we need to catalyse cross-sectoral area-based planning in ABNJ?

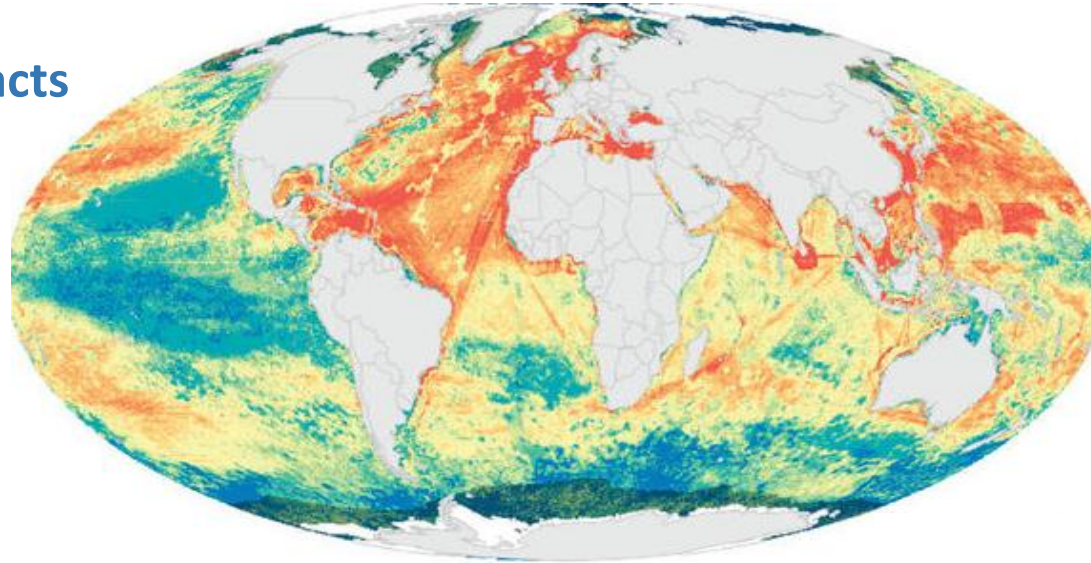
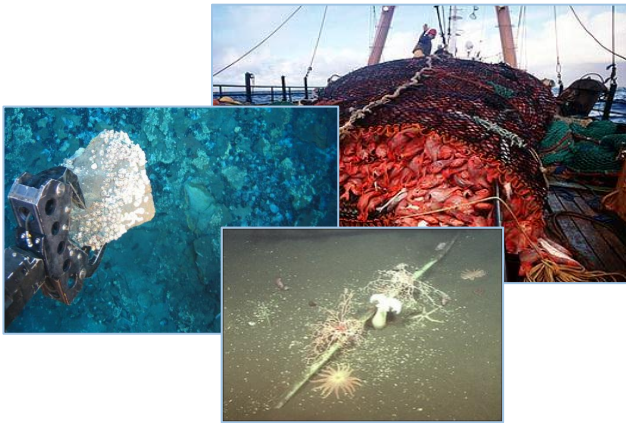
3) Share knowledge and learn from other experiences



What do we need to catalyse cross-sectoral area-based planning in ABNJ?

4) Develop the necessary assessments and tools

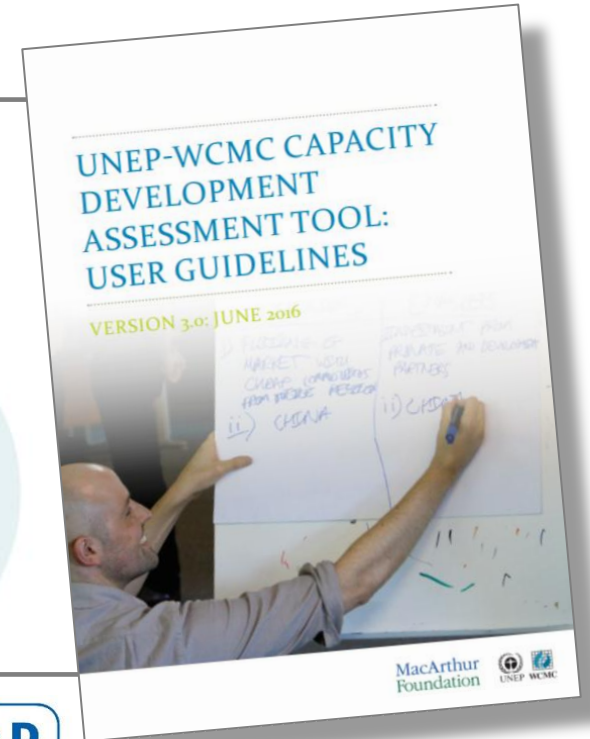
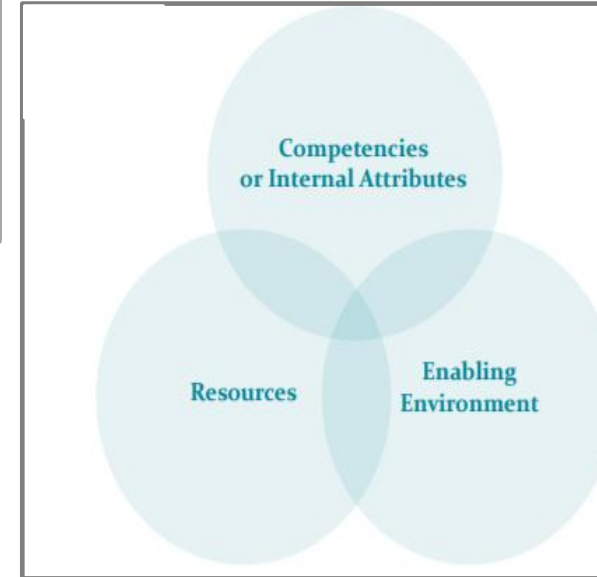
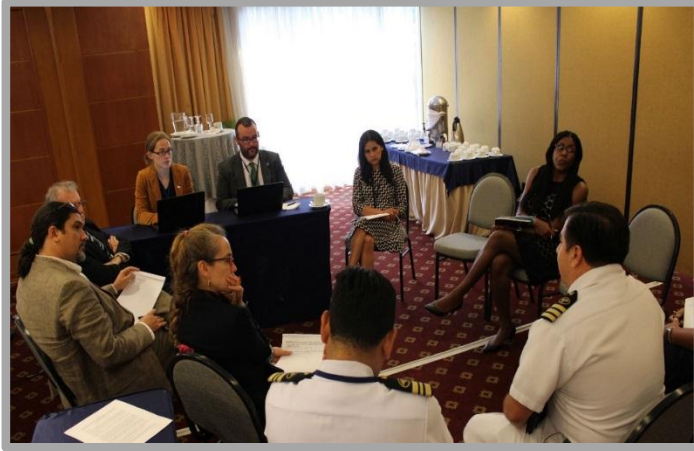
Regional cumulative impacts



Global and regional data inventory

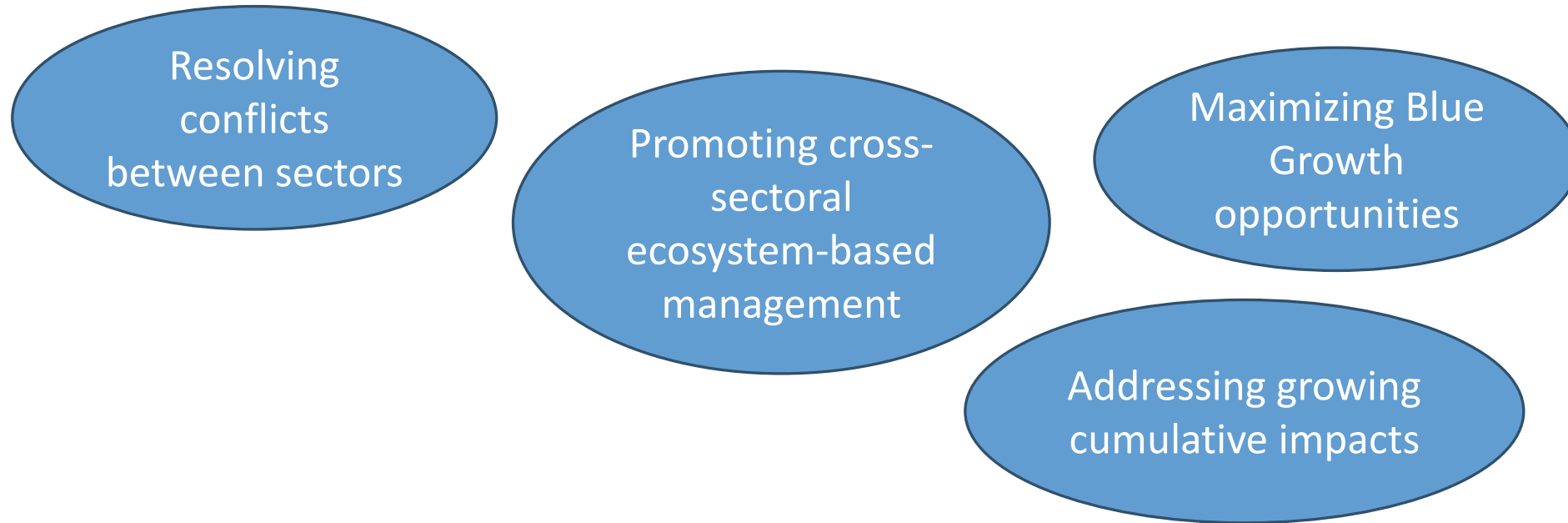
What do we need to catalyse cross-sectoral area-based planning in ABNJ?

5) Assess and develop capacity to engage in ABNJ issues



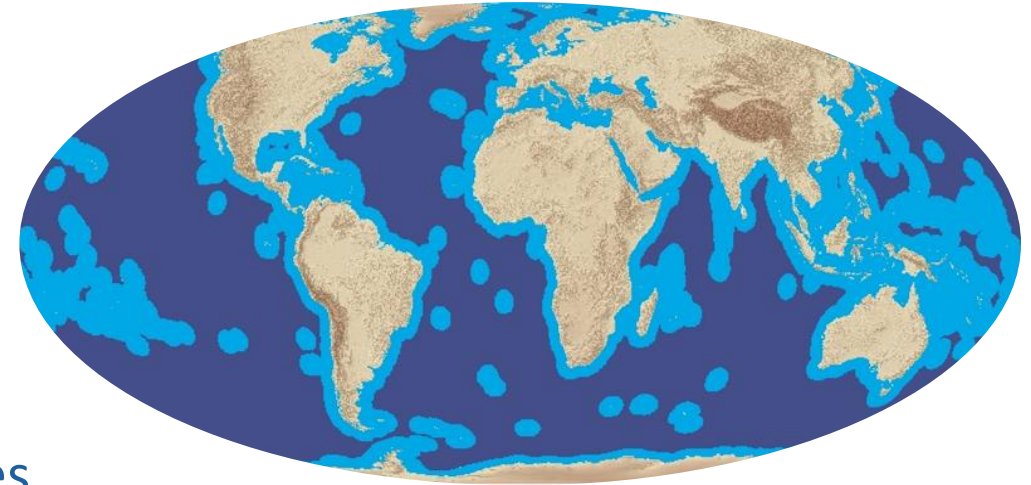
What do we need to catalyse cross-sectoral area-based planning in ABNJ?

6) Provide the necessary drivers and opportunities for cross-sectoral engagement



- * **Partnerships and collaborations are fundamental to improving ABNJ governance:**

- * Between **sectors** to deliver an ecosystem approach
- * Between **countries** to drive joined up sectoral priorities
- * Between **regions** to exchange experiences
- * Between **agencies** to align initiatives and funds
- * Between **scientists** to demonstrate connectivity and adapt supporting tools



64%
of the ocean's
surface

95%
of the water in
our oceans is
located in ABNJ

ABNJ takes up
of the planet **40%**



Hannah Thomas

Project Manager, UNEP-WCMC

ABNJ Deep Seas Project (UNEP Component)

Email: hannah.thomas@unep-wcmc.org

Web: www.unep-wcmc.org & www.fao.org/in-action/commonoceans

Thank you



Project Partners:



Food and Agriculture
Organization of the
United Nations



Convention on
Biological Diversity

