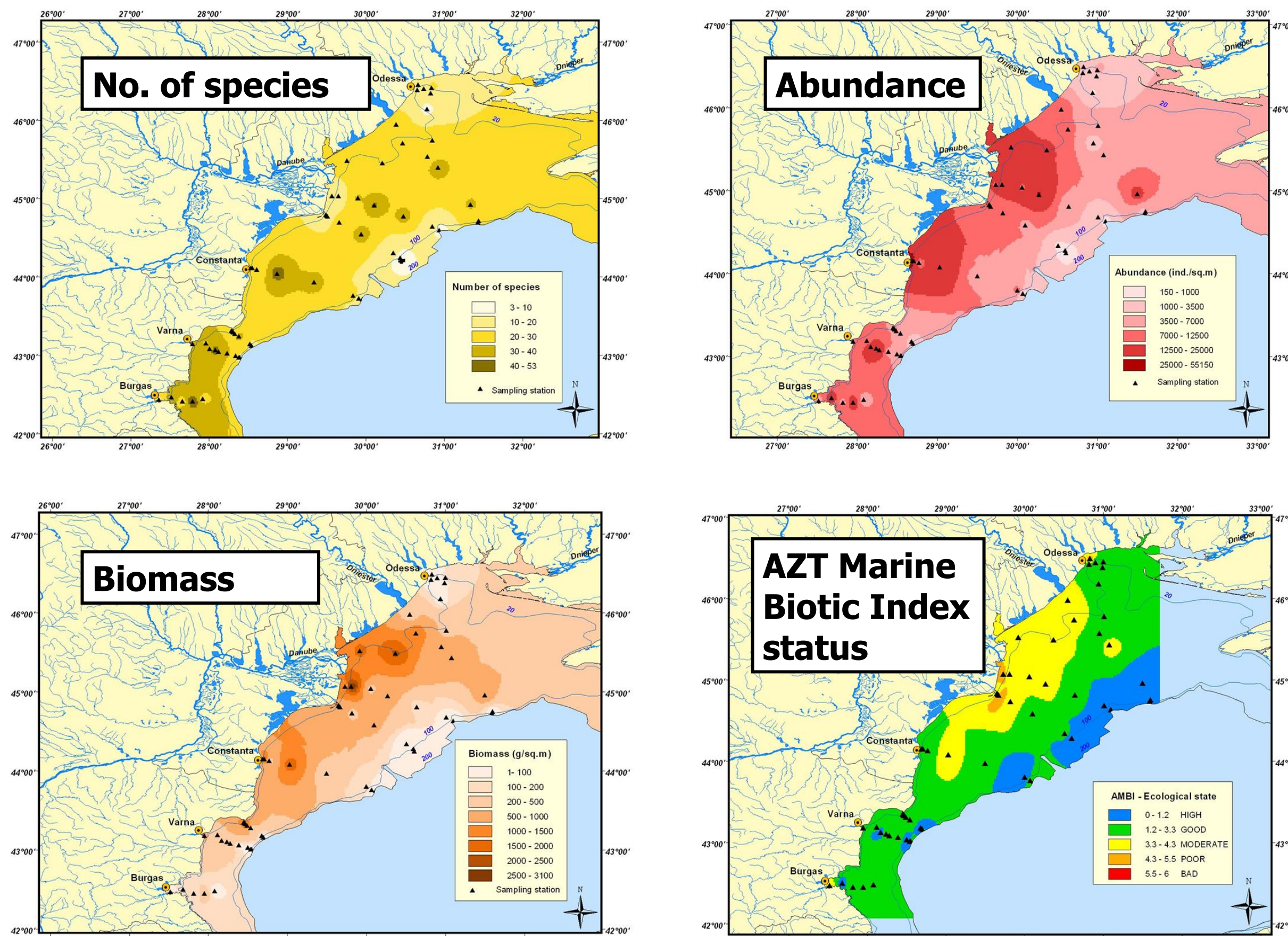


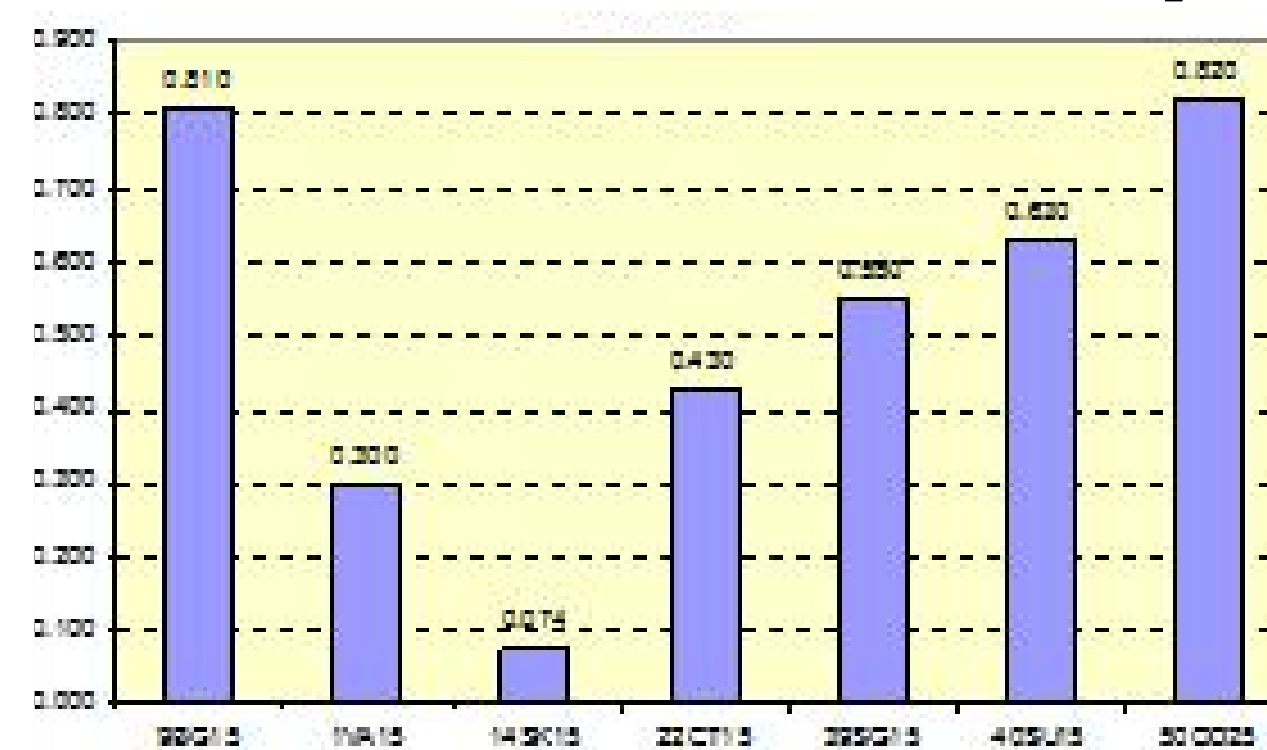
Results from BSERP Research

Zoobenthos



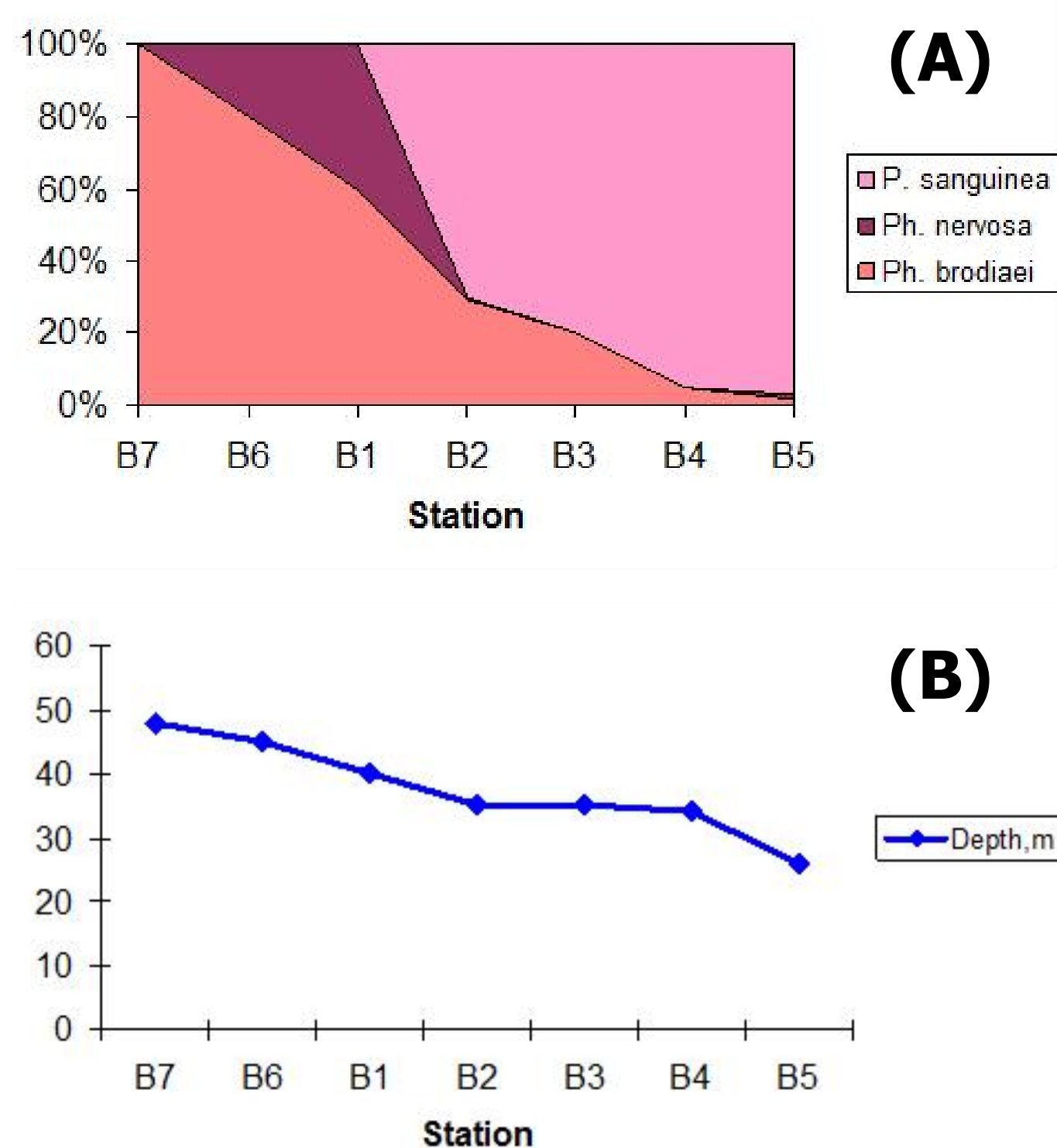
Macrozoobenthos distribution data and their use in assessing ecological status (2004)

Sediment chemistry



Lindane concentrations in surface sediments of (October 2003)

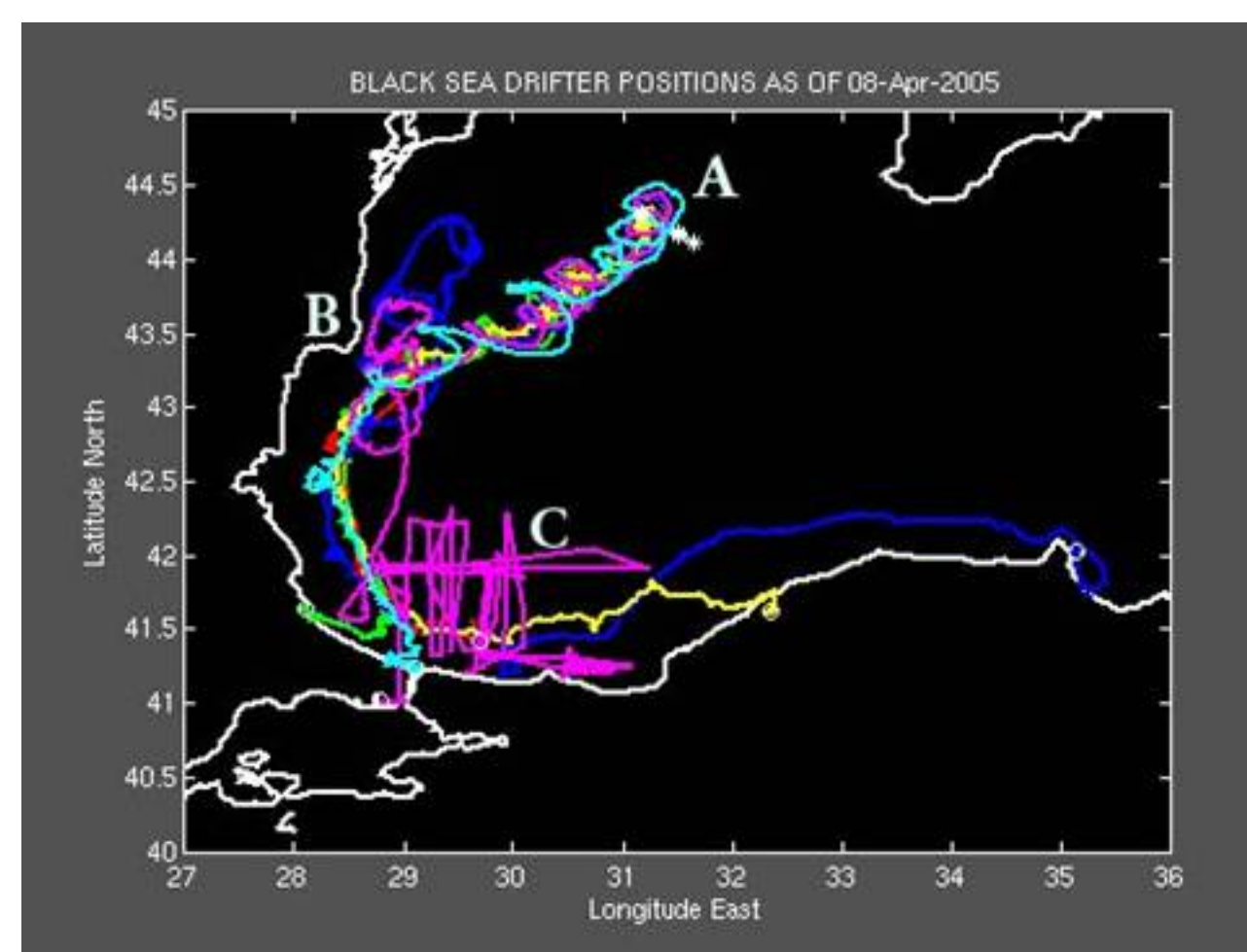
Phytobenthos



Change in macroalgal species dominance (A) with depth (B) in the *Phyllophora* field (Summer 2006)



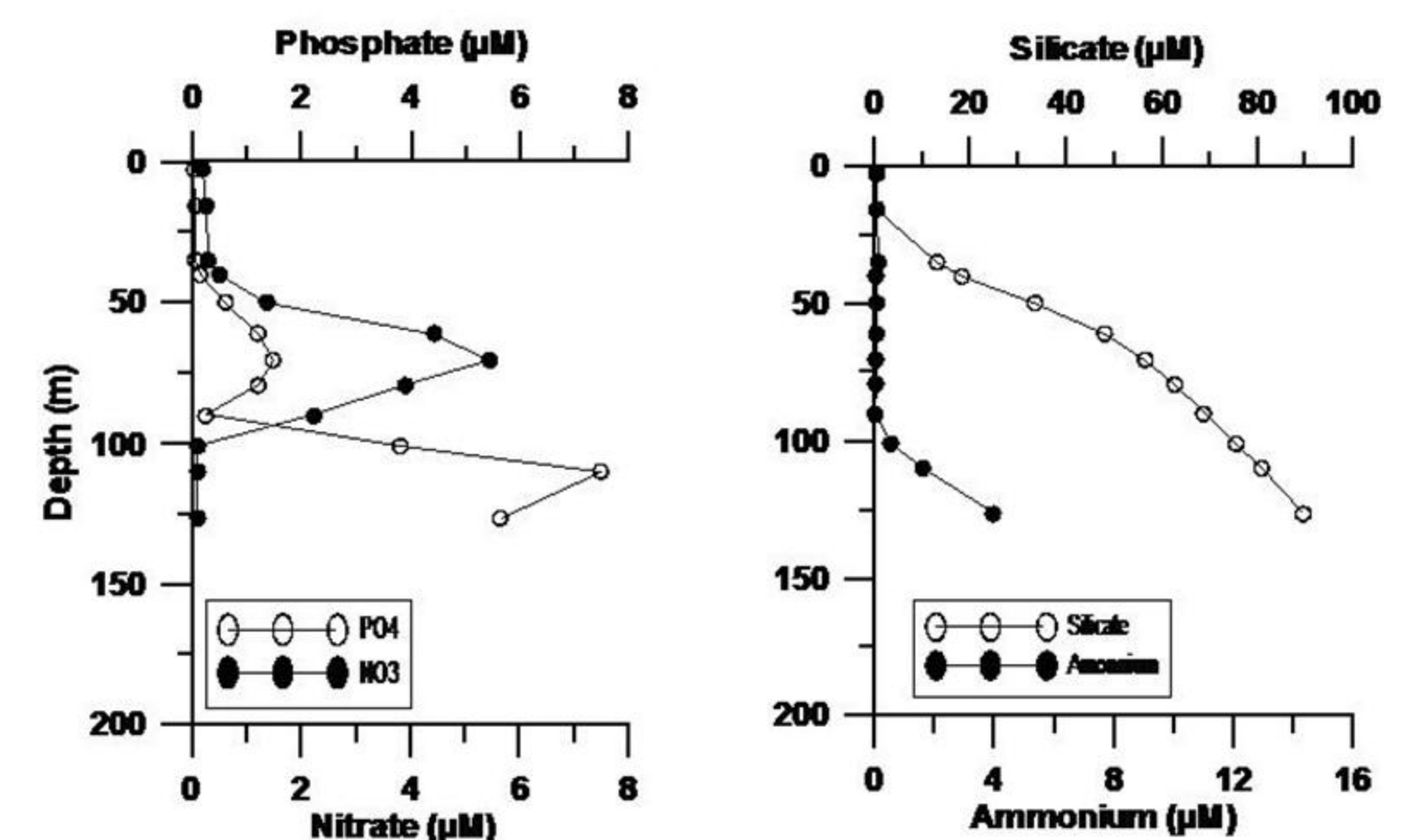
Water movement/mixing



Eddy current movement using surface water trackers (Spring 2004)

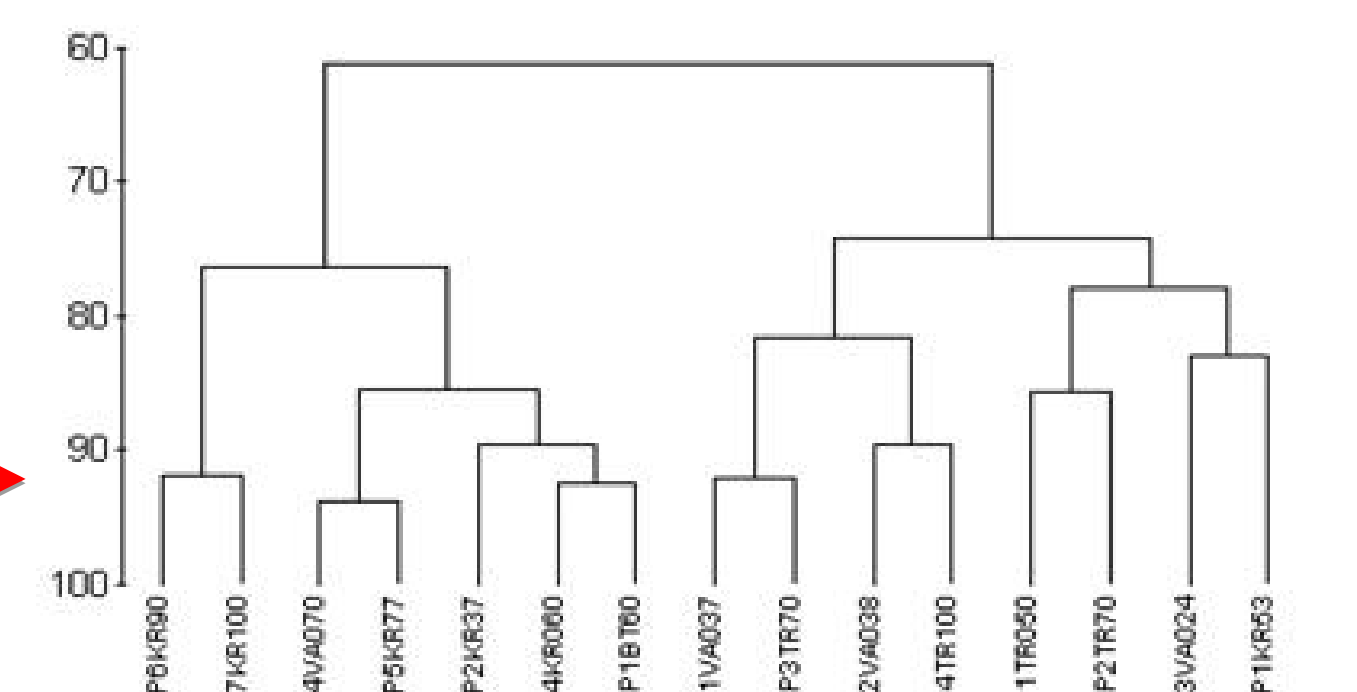
- Four research cruises (2003, 2004, 2005, 2006)
- Huge amount of data gathered from 4 cruises on biology, chemistry and physical processes
- Where possible, information placed in historical context
- Data available for use in future studies

Water chemistry



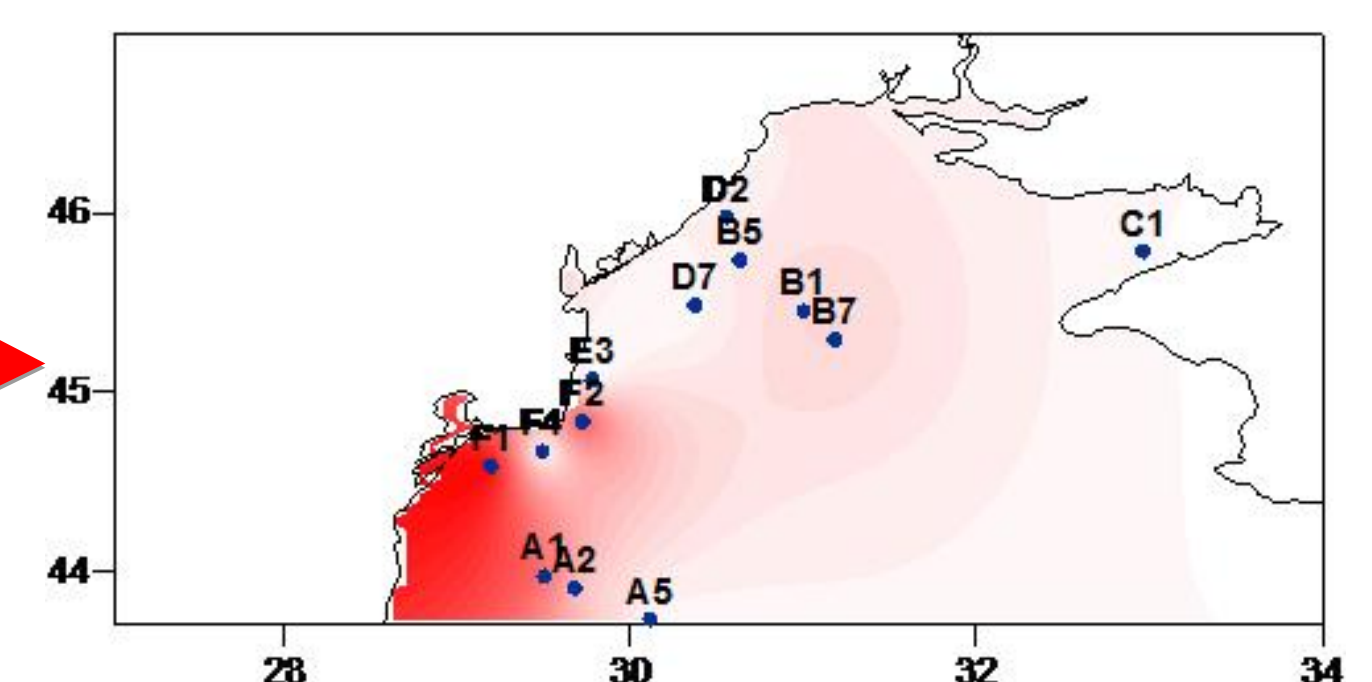
Nutrient depth profiles from an open sea station (October 2005)

Phytoplankton

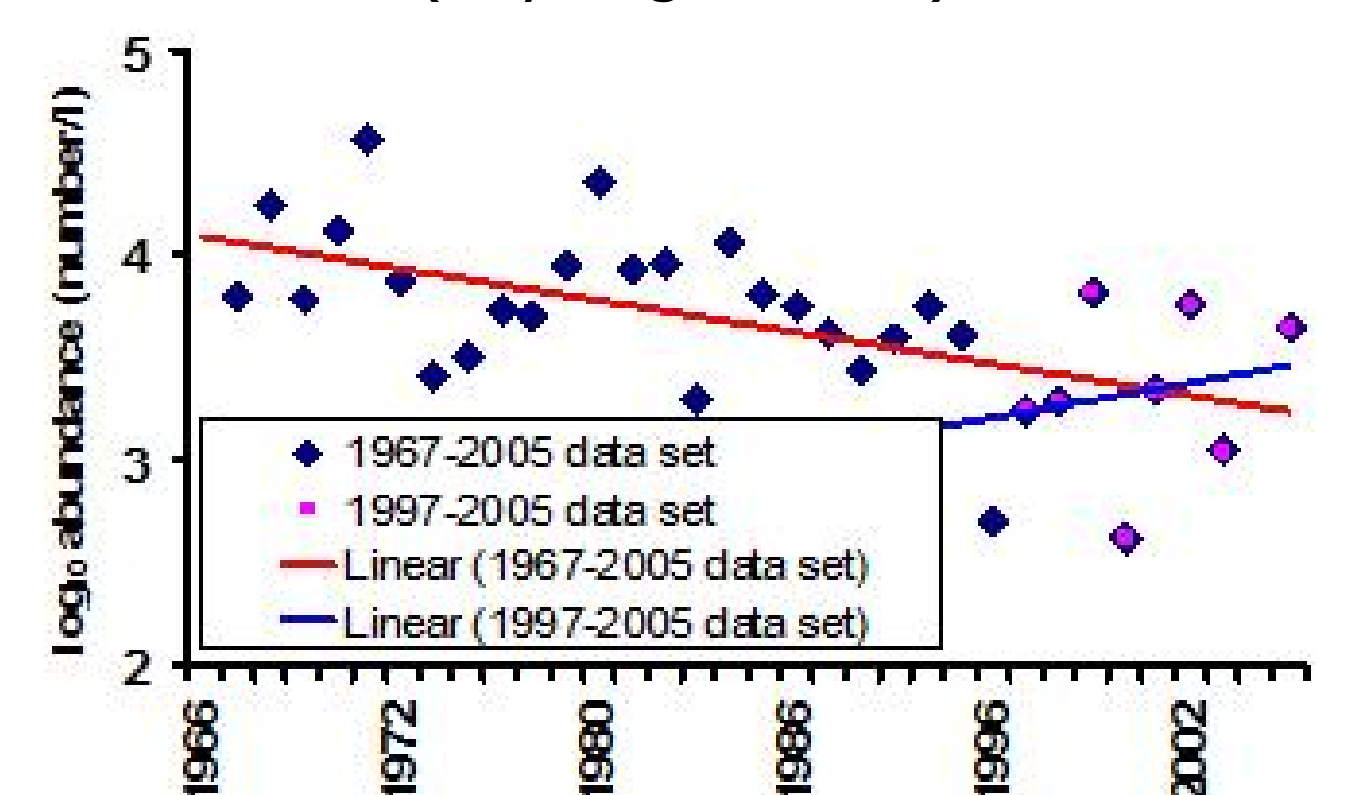


Bray Curtis similarity dendrogram of sampling sites based on phytoplankton abundance (September 2005)

Zooplankton



Zooplankton biomass distribution (July/August 2006)



Long-term summer abundance of Cladocera and Copepoda three nautical miles offshore of Cape Galata