



PROGRAMA MARCO PARA LA GESTIÓN SOSTENIBLE DE
LOS RECURSOS HÍDRICOS DE LA CUENCA DEL PLATA,
EN RELACIÓN CON LOS EFECTOS DE LA VARIABILIDAD Y
EL CAMBIO CLIMÁTICO

PROGRAMA MARCO PARA GESTÃO SUSTENTAVEL DOS
RECURSOS HIDRICOS DA BACIA DO PRATA,
CONSIDERANDO OS EFEITOS DECORRENTES DA
VARIABILIDADE E MUDANÇAS DO CLIMA



The Framework Program for the Sustainable Management of La Plata Basin's Water Resources

with respect to the effects of climate variability and change

Ignacio Masson, Ph.D.
Project Management Assistant
International Coordination Unit

ARGENTINA

BOLIVIA

BRASIL

PARAGUAY

URUGUAY



CIC



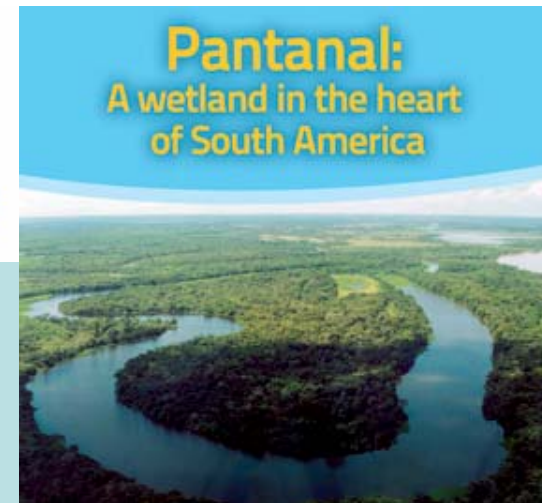
GEF/FMAM



UNEP/PNUMA



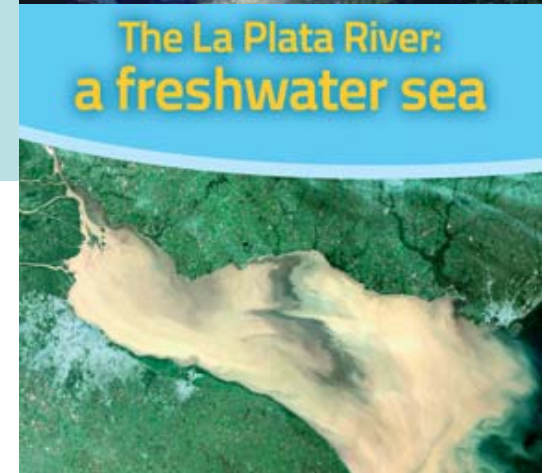
OAS/OEA



Pantanal:
A wetland in the heart
of South America



Iguazú:
Wonderful Water



The La Plata River:
a freshwater sea

3.1 million sq. km



The Intergovernmental Coordinating Committee of La Plata Basin Countries (CIC, in Spanish)

- 1967 → Creation of CIC (during the First LPB's Foreign Affairs Ministers Meeting)
- 1969 → Signature of the La Plata Basin Treaty
 - basis for further agreements: navigation, fishing, pollution prevention, scientific research, etc
 - CIC consolidated as the organ promoting its objectives



The Framework Program

Objective: to strengthen **transboundary cooperation** among the riparian country governments to ensure the integrated and **sustainable management of shared water resources** of the LPB within the context of **climate variability and change**, while capitalizing on development opportunities



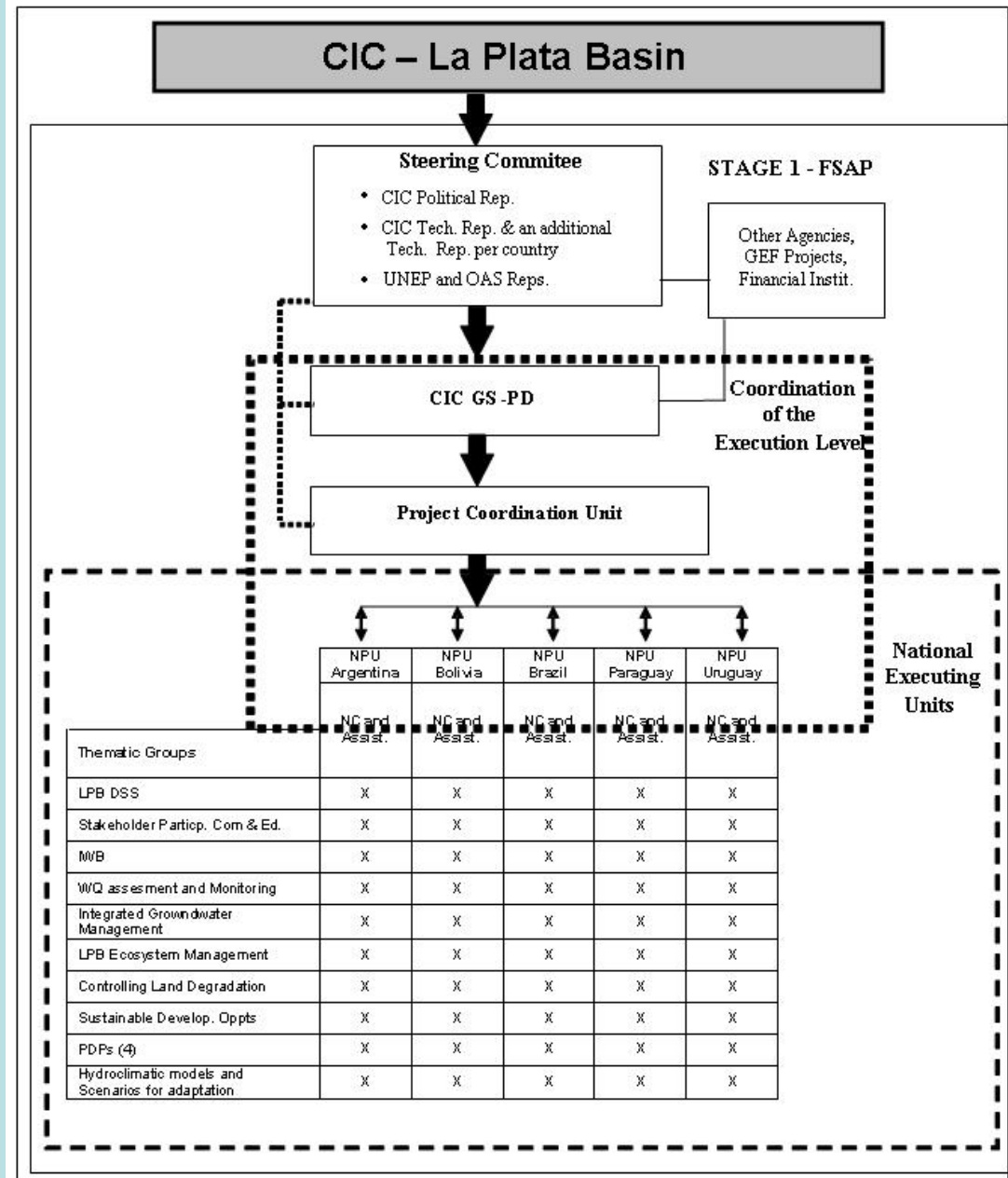
Expected Project Outcome

The riparian governments' ability to **coordinate actions** and **investments** in the **La Plata Basin** for **sustainable** use of water resources within the context of **climate variability and change**



Key Project Results: Process (2010-2015)

- Interministerial mechanism for project planning and implementation
- Completion of a scientific and socially-based Transboundary Diagnostic Analysis (TDA)
- Agreed-upon Strategic Action Plan (SAP)



Key Project Results: Stress reduction (2010-2015)

- Integrated Water Balance to contribute to IWRM of the basin's
- LPB environmental degradation model operational with forecasting capability
- Groundwater management guidelines address issues such as artificial recharge, protecting recharge areas, recharge continuity, etc.
- A biodiversity conservation strategy and management plan
- An ecological corridor defined and agreed upon by competent institutions coordinated by the CIC
- Maps provide information on land degradation



Major Challenges and Constraints Threatening Successful Delivery

- Continued active involvement of national institutions and experts
- Others:
 - Political/institutional settings
 - More/Less technologically developed countries
 - Information sharing



Priority Capacity-building Needs

- WQ monitoring
- Best Land Use Management Practices
- Common Transboundary Forecasting/Alert System
- Climate Change Modelling
- Clean Technologies and sustainable Tourism



Needs for Collaboration

- Exchange projects experiences in TDA and SAP preparation, stakeholder involvement, among other topics
- Exchange of regional experts among projects for collaboration in common thematic issues (e.g, biodiversity, climate change, etc.)
- SAP implementation financing strategies

Thank You!

