

Progress Report UNEP/GEF IW:LEARN

Q2 Outputs (April - June) and Planned Activities for 2008

IA Lead: UNEP

Project Manager: Sean Khan
PAL: SEA START RC, Chulalongkorn University

The activities of UNEP/GEF IW:LEARN can be divided into three main outputs, comprising managing the GEF IW:LEARN information system (Output A1), ICT assistance provided to GEF IW projects (Output A2), and organising the Caribbean Inter-linkages Dialogue Workshop for a regional learning exchange focusing on data management (Output B1).

Refer to the hyperlinked Work Plan (Fig. 1) for more details regarding the scheduling of all 2008 tasks.

1. Main Outputs for Q2

[activity/task], [planned release date]

Outputs planned for Q2 (extracted from 2008 Work Plan) are described below.

Output A1: Designed and operating GEF IW:LEARN information system on the internet that serves as a repository of IW project data and information and, a bi-directional medium for disseminating and accessing information resources of benefit to projects and the IW community.

Activity A1.1: Design, launch and maintain the GEF IW:LEARN Information system, Jan 2009

- 1.1.1 Improve dead link report, May 2008
Status: possible solutions identified, evaluation underway. Launch date of a link checker for the IW portfolio (not just iwlekarn.net) anticipated August 08.
- 1.1.5 General Operations, Jan 2009
 - 1.1.5.1 Investigate options for improved administrative arrangement, March 2008
Status: Currently out sourcing server administration, maintenance and technical back stopping on Plone development through several retainer based contracts to further lower IT support costs and maintain a high responsive rate to projects using the website toolkit and IWLEARN website. UNEP IW:LEARN will continue to use iland.com Internet Solutions for hosting its website and services, with additional co-server re-established in RONA at the margins of the July 08 IW:LEARN SC meeting; server uptime and connectivity has proved excellent since MTR. Additional temporary hires for technical and administrative support are being explored by UNEP IW:LEARN through the Bangkok based sub project (SEA START RC).

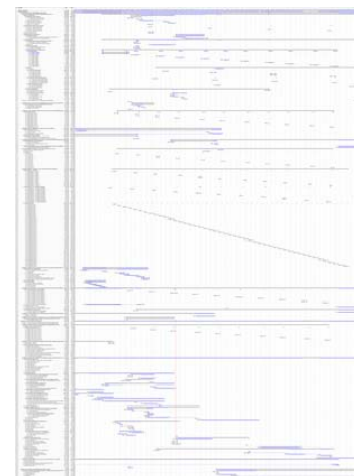


Fig. 1: UNEP/GEF IW:LEARN 2008
Work Plan

- 1.1.5.3 Develop a marketing plan, March 2008
Status: marketing plan is under discussion (it was also addressed during drafting of Sustainability Plan – see 1.1.5.6 below). In addition, to the website review conducted in this period, an IW portfolio needs survey is being planned for Q3/08 which will provide more information.
- 1.1.5.4 Develop and implement an e-bulletin system, Dec 2008
Status: e-bulletins are being released to the IW community (approximately 1000 subscribers) every month and new subscriptions self registered each month (~15/month). In addition, there has been an increase in the number users sending feedback to GEF IW:LEARN as a result of the e-bulletin service.
- 1.1.5.6 Develop Sustainability Plan, Sept 2008
Status: drafted in Feb/March 2008, submitted to the IW:LEARN SC for consideration.
- 1.1.5.6.3 Conduct survey on project services
Status: prepared survey questions and online web survey for both users of IWLEARN.NET and toolkit users, identified incentives to increase response rates, survey implementation to take place in last week of July

Activity A1.4: Develop a search engine for the GEF IW:LEARN information system that can access information held in various project and stakeholder websites, April 2008

- 1.4.1 Improve interactive aspects of accessing information on the website, April 2008
Status: specifications for interactive search drafted and finalized, with interface undergoing evaluation. Note that this represents an additional refinement to GEF IW:LEARN's search engine; while initially implemented using the Google-based customised search engine, the refinement involves integrating the EcoMundus search engine and content into the IW:LEARN search results to provide a more responsive and interactive interface for users. Automatic clustering of search results to produce meaningful categories of information using EcoMundus is being explored. The model is available at:
<http://search.ecomundus.net/unep-webapp>
 Release of a more interactive iwlearn.net is anticipated for Q3/2008.

Activity A1.5: Produce and maintain an online calendar of IW events as part of the GEF IW:LEARN information system, Dec 2008

- Update of calendar events, Dec 2008
Status: calendar of events established and actively maintained and accessible at
<http://www.iwlearn.net/calendar>

Activity A1.6: Develop a multilingual glossary and/or thesaurus of IW terminology, July 2008

- Produce Water Thesaurus (tentative), March 2008
Status: completed. Report (and recommendations) included as part of SC package and being considered as part of the re-design of iwlearn.net

Activity A1.8: Implement a disaster recovery system (e.g. back-up or mirror server), Dec 2008

Status: Fully operational with enhancements planned this year.

Activity A.1.9: Maintain a meta-database of the GEF IW project portfolio and stakeholders, Dec 2008

- 1.9.1 Update databases – via mailout, Dec 2008
Status: updating of databases is a key long-term process. Communication with projects is ongoing to update their project profiles in the GEF IW:LEARN Project Database

(<http://www.iwlearn.net/iw-projects>), including uploading of project outputs, and also the Contacts Database (<http://www.iwlearn.net/con-info/contacts>). New GEF project entries have been uploaded to the Project Database and a majority of project contacts have been updated through the assistance of contacts in the IAs and active communication with the projects. Key input for updating the contacts database is expected through the IW Learn survey planned for Q3/08.

- 1.9.2 Update databases – new additions to GEF pipeline, Dec 2008
Status: new additions to GEF pipeline are updated.
- 1.9.3 Vet/update RSS feeds, Dec 2008
Status: these are regularly monitored and updated.

Activity A.1.10: Deploy at least 2 collaborative tools (such as list servers, blog or syndication tools) to encourage dialogue among GEF project practitioners and to support implementation of GEF IW:LEARN structured learning activities, March 2008

- 1.10.1 Launch Course Catalogue module, March 2008
Status: prototype has been completed as anticipated.
- 1.10.2 Launch Africa Module, January 2008
Status: [Http://africa.iwlearn.org](http://africa.iwlearn.org) is now launched as a website for the Africa Governance Process MSP. Terms of Reference to hire an expert to enhance the module to be more interactive are being finalized by UNOPS.

Activity A1.11: Compile and make accessible selected data and information on key topics identified through GEF IW:LEARN surveys, feedback from projects and IW conferences, Jan 2009

- 1.11.1 Enter new information sources into EcoMundus, Dec 2008
Status: This process is underway (see <http://search.ecomundus.net/unep-webapp>). GEMS Water has agreed to compile various information sources on the internet (databases in particular) for Ecomundus to crawl and index. In turn these resource will become available through IW:LEARN search function.
- 1.11.2 Compile and enter Regional Seas reports into IWLEARN.Net, March 2008
Status: All Regional Seas reports have been scanned and made machine readable through the use of OCR compatible PDF files. These are expected to be uploaded to the website with associated metadata in the coming weeks. In turn, these resources will be searchable by the GEF IWLEARN search engine in addition to internet web crawlers (e.g. Google)
- Integrate IWSEA Roster into website, July 2007
Status: this task is on hold pending development of new GEF IW:LEARN search engine (see activity 1.4.1 above).

Activity A1.13: Develop and operate an archive/repository service for GEF IW project data and information, May 2008

- 1.13.1 Put in place a systematic process to gather “needed” data and information from projects, Feb 2008
Status: integrated folders within project database for archiving project outputs. Implementation completed and project outputs being uploaded on a continuous basis.

Fig.2-7: Graphs and charts showing visitor statistics for IWLEARN.NET.

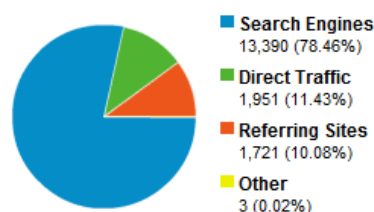
Comparative statistics for IWLEARN.NET

Year 2008	1st quarter	2nd quarter
Visits	16,877	17,065
Pageviews	55,119	57,987
Pages/visit	3.27	3.40
Ave. time on site	3mins.09sec.	3mins.25sec.
% of new visits	78.18%	76.75%

2nd Quarter Statistics for IWLEARN.NET

Google Analytics

 **11.43%** [Direct Traffic](#)
 **10.08%** [Referring Sites](#)
 **78.46%** [Search Engines](#)



Top Traffic Sources

Sources	Visits	% visits
google (organic)	12,257	71.83%
(direct) ((none))	1,951	11.43%
yahoo (organic)	499	2.92%
gefweb.org (referral)	236	1.38%
live (organic)	212	1.24%

Keywords	Visits	% visits
humberto goncalves	190	1.42%
international waters	148	1.11%
iw learn	119	0.89%
log frame	88	0.66%
iwlearn	84	0.63%

Top pages

Top pages	Pageviews ↓
1. / homepage	1,347
2. /iw-projects	343
3. /jobs	215
4. /con-info	182
5. /publications	172
6. /abt iwlearn	162
7. /websitetoolkit	157
8. /abt iwlearn/events	151
9. /iw-projects/iwProject_search	144
10. /login_form	138



Output A2: ICT assistance provided to GEF IW projects



Activity A2.2: Develop and maintain a ICT help section within the IW:LEARN information system, Dec 2008



- 2.2.1 Add Plone resources from IWSEA to Toolkit section, Nov 2007
Status: key information resources have been migrated to the Toolkit section, and the latter will itself undergo further development as per activity 2.2.2 below.
- 2.2.2 Update ICT section with new FAQs etc, Dec 2008
Status: entire ICT section will be modified and updated, to also include non-English material. Resources in Spanish are now accessible in the IWLEARN website.

Activity A2.3: Develop a website toolkit to enable any GEF project to deploy and manage a project website and exchange information with other projects and stakeholders, Feb 2008

- 2.3.1 Set up mailing list for Toolkit users, Feb 2008
Status: the list of all project toolkit users and focal persons has been posted on the intranet.

Activity A.2.4: Conduct at least 2 regional ICT capacity building workshops among GEF IW projects to enable projects to utilise the Website Toolkit and associated utilities, Feb 2009

- 2.4.2 Asia Workshop follow up, May 2008
Status: new websites have been developed for several projects including the GEF Livestock Waste Management Project in East Asia Project (now actively used by the project), GEF Ningbo Cixi Wetland Project (80 percent complete awaiting new design skin) and Guarani Aquifer System Project (specifications finalized by project and being implemented), Dinaric Karst Transboundary Aquifer System and the Regional Dialogue and Twinning to Improve Transboundary Water Resources Governance in Africa. Other projects that are actively being followed up include Shandong Second Environment Project, Liaoning Medium Cities Project, and Hai Basin Integrated Water Resources Management Project.
- 2.4.3 Organise ICT mini-Workshop for LAC, June 2008
Status: the workshop was held on 2 – 6 June 2008 at Florida Atlantic University, Boca Raton, FL, USA.
A list of actions and commitments have been identified by the participants, including the finalization of the Guarani toolkit site, the creation of toolkit site for the Gulf of Honduras Project, and migration of the IWCAM to the CEP platform, and syndication and data submission for archiving.
- 2.4.5 Organise follow up Data/Networking Workshop in Asia, May 2008
Status: The workshop was held 5 – 9 May in Vientiane, Laos, and was hosted by the MRC Secretariat. Accessibility to data and information governed by MRC is anticipate in Q4/08 as a result of the workshop.

Activity A2.5: Conduct periodic surveys to assess user needs and effectiveness of ICT utilities, Dec 2008

Status: surveys routinely conducted at workshops, and to be requested during updating of project profile database. The survey to be implemented end of July also includes a comprehensive survey for toolkit users. Annex-I details results of the last workshop survey (USA/June 08).