

IW:LEARN and GeoNode Training

Friday 14:30 – 18:00

Overview of IW:LEARN services

Training on spatial data management using GeoNode

Discuss project needs for spatial data management





Outline

Overview of the IW:LEARN services

Introduction to spatial data management

Training in GeoNode

Opportunity for project managers to talk about their project needs, future training opportunities



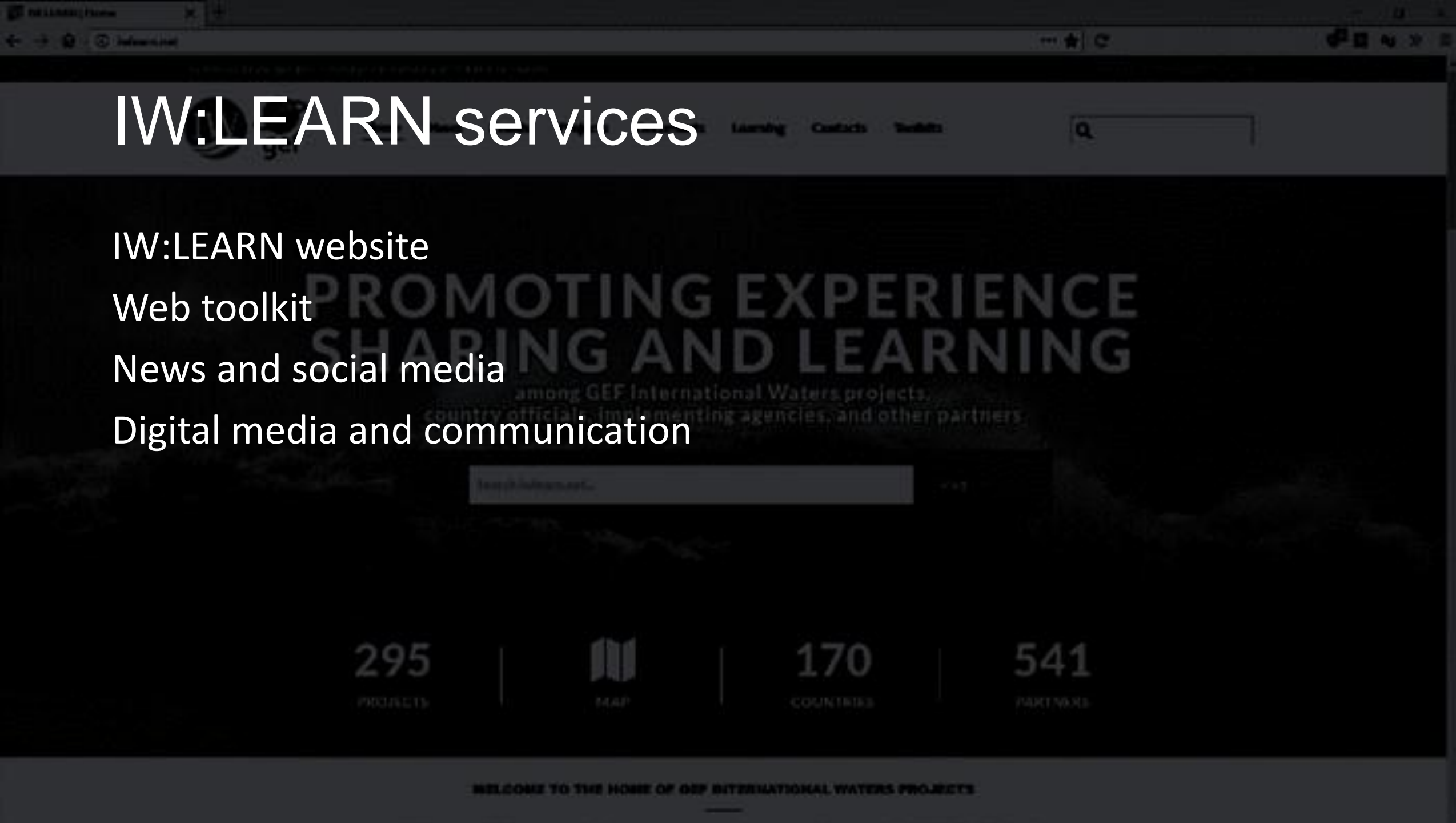
IW:LEARN services

IW:LEARN website

Web toolkit

News and social media

Digital media and communication





Website Toolkit

The Website Toolkit provides support for developing a dynamic content management system, that is linked and searchable through IW:LEARN's International Waters Information Management System. The resulting network will allow access to high quality data and information and ensure dissemination to a broader community of stakeholders.

IW:LEARN works with GEF International Waters projects to improve online sharing of data and information relevant to managing international waters, including marine, coastal and freshwater ecosystems.

With the Website Toolkit, IW:LEARN is able to provide GEF IW projects the support they need for developing a dynamic content management system. Websites developed using the Toolkit incorporate usability, accessibility and metadata standards, and will be linked through IW:LEARN and UNEP's distributed discovery mechanism. The resulting network will allow access to high quality data and information and ensure dissemination to a broader community of stakeholders.



Website Toolkit

- How to: Edit content
- How to: Work with sections
- How to: Work with page layout
- How to: Work with styles & scripts
- How to: Work with other languages
- How to: Use the admin interface
- How to: Setup a server (Server admins)

About the CMS

The CMS that has been built for IW:Learn is called Rocky CMS. It is built using open source technologies and could run on any platform.

Even so, the idea (at least for now) is that project sites should be hosted and run from the IW:Learn server. IW:Learn technical staff will take care of setup, databases and upgrades.

The CMS will continue to develop with new features, and the documentation in this section will change with it. There will also be videos available to explain the various topics of how to operate the CMS.

Communication and digital media

News stories

Social media

Video

Support and training

NIUE TO CREATE LARGE-SCALE
MARINE PROTECTED AREA

United Nations Development Programme



By IWILearn

NOVEMBER 14TH, 2017

[Home](#)[News](#)[Events](#)[Projects](#)[Documents](#)[Learning](#)[Contacts](#)[Toolkits](#)[IW:LEARN NEWS](#)[PROJECT NEWS](#)[PARTNER NEWS](#)

Niue to create large-scale marine protected area

 14 Nov 2017 by IW:LEARN on Exposure

Area will encompass 40% of Niue's Exclusive Economic Zone, second largest in the world in terms of proportion of ...



We all have issues... to analyse

 07 Sep 2017 by IW:LEARN on Exposure

In early 2016, it was reported that the salinity level of water in Thailand's Chao Phraya River was dangerously high,...



Seagrass carbon in the NOWPAP Region

 05 Sep 2017 by IW:LEARN on Exposure

UN Environment/GEF Blue Forests Project were invited last month to lead the discussions on methodologies for assessin...



MPAs Over the Finish Line - Request for Proposals




Does the GEF-supported TDA-SAP Process Help Cou...



First global indicator-based assessment of all ...

[Home](#)[News](#)[Events](#)[Projects](#)[Documents](#)[Learning](#)[Contacts](#)[Toolkits](#)

Collaborating to save the global ocean

 27-28 November, Cape Town, South Africa

Effectively managing the world's oceans and safeguarding them for future generations is not achievable alone. Partnerships are ...




The 19th Annual LME Consultative Meeting

 29 November - 1 December, Cape Town, South Africa

The 19th Annual LME Consultative Meeting, organized by the LME: LEARN Project, taking place from 29 November to 1 December 2017...



4th Targeted Regional Workshop for GEF IW Proje...

 9-11 October 2017, Montevideo, Uruguay

The 4th Latin America & Caribbean Targeted Regional Workshop for Global Environment Facility (GEF) International Waters (IW) Pr...



LAC Connects: 1st Annual Latin America and the



Scaling-Up Pollution Control and Wastewater Man



Africa Connects: 1st Annual Africa Regional Net

Introduction to spatial data management

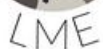
Types of spatial data

Importance of metadata

Spatial Data Infrastructure (SDI)

Welcome to IW:LEARN Spatial Lab

Discover The IW:LEARN Spatial Datasets



Search for Data.



Geonode training

How to create an account

Exploring the interface

Upload your own data

Styling Data

Creating metadata

Creating maps

Sharing maps

LAYERS » LMES

About DISPLAY Available Styles

Display options

Opacity:

Format: ☒ Transparent

Single tile: ☐ Use a single tile

Cache: ☒ Use cached version

Info format:

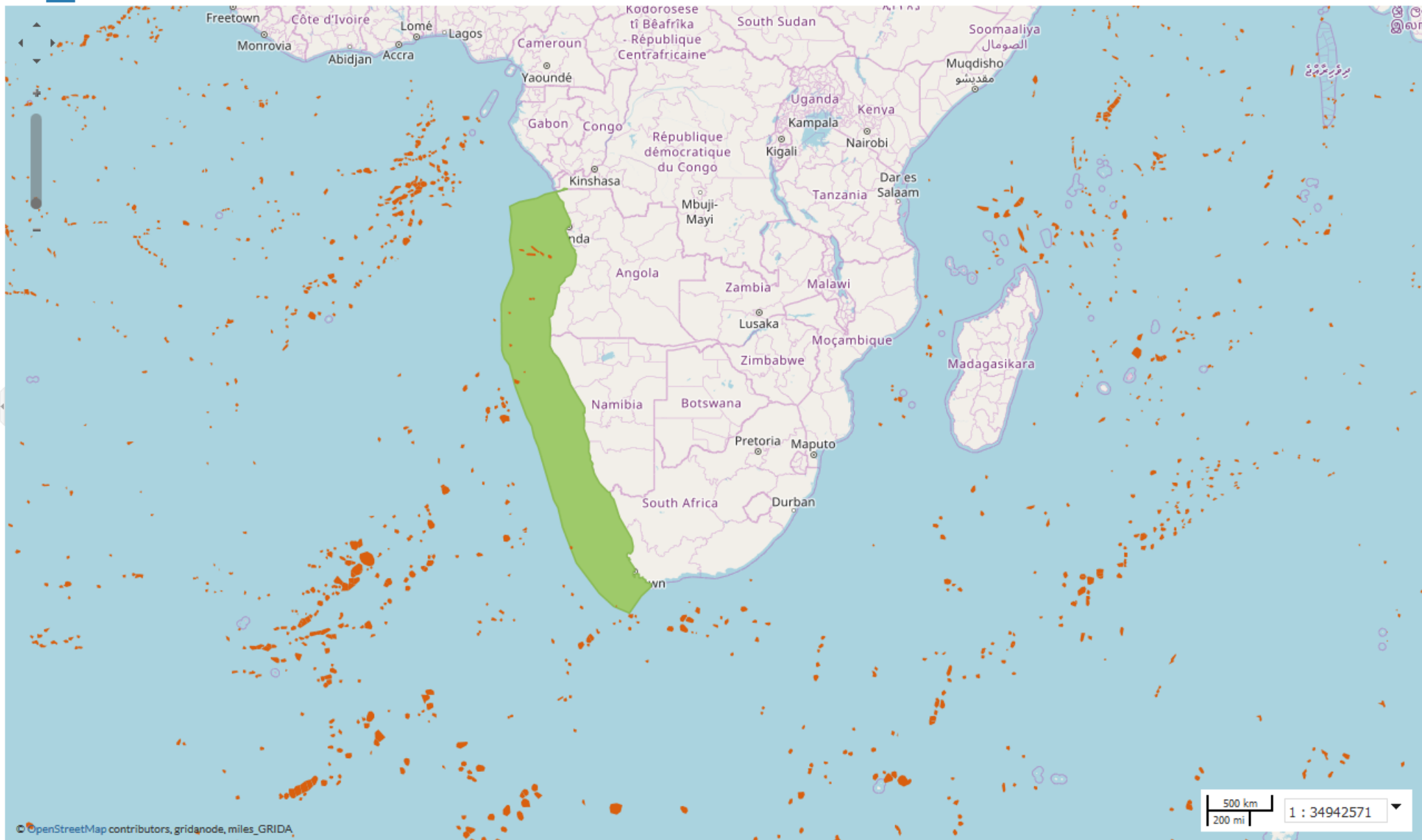
☒ Limit with filters

Match of the following:

☒ NAME

☐ add condition or use CQL filter instead

☐ Limit by scale



Live demonstration



[Home](#)[News](#)[Events](#)[Projects](#)[Documents](#)[Learning](#)[Contacts](#)[Tools/its](#)[WEBSITE TOOLKIT](#)[GEONODE TOOLKIT](#)[REQUEST A WEBSITE](#)


GeoNode toolkit

The IW:LEARN Spatial Lab aims to provide a customizable mapping of the GEF International Waters (IW) portfolio and provide a visualization of studies, reports and intervention results on the various transboundary water basins pulled together with the help of the GEF IW projects, partner organizations and authoritative sources and other contributors.

The IW:LEARN Spatial Lab aims to provide a central service for sharing and discovering geodata. The platform lets users upload, manage, and browse and visualize data, and export public data in reusable formats.





This is made possible through GeoNode which is an open source platform for sharing geospatial data and maps.

[› GeoNode toolkit](#)[› How to: Create an account](#)[› How to: Explore map layers](#)[› How to: Search for datasets](#)[› How to: Upload a layer](#)[› How to: Change layer styling](#)[› How to: Publish a map](#)

 Data ▾ Maps About ▾ [Register](#) [Sign in](#)

Welcome to IW:LEARN Spatial Lab

Discover The IW:LEARN Spatial Datasets



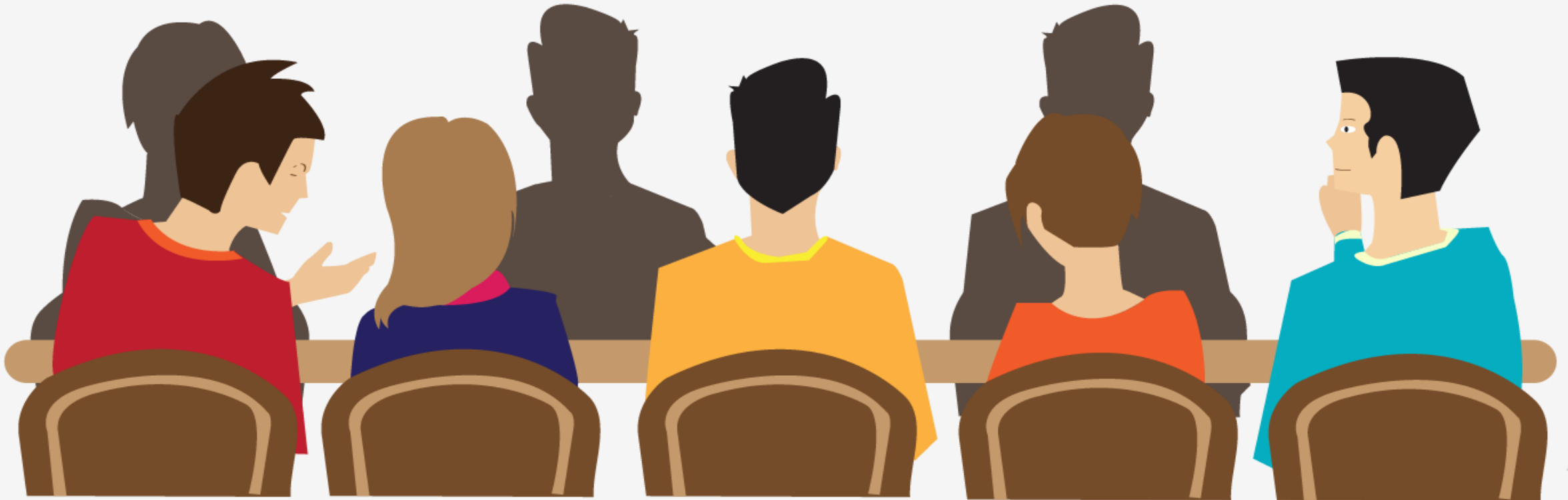
Search for Data.

[Advanced Search](#)

Speak with project managers

Project needs

Training and support opportunities



Friday 14:30 – 18:00

Overview of IW:LEARN services

Training on spatial data management using GeoNode

Discuss project needs for spatial data management

