



The GEF
International Waters Learning
Exchange and Resource Network
(IW:LEARN)



Portfolio Learning Projects

South Africa
March 2014

Global LME Governance: Mandate

- “Strengthening Global Governance of Large Marine Ecosystems and Their Coasts through enhanced sharing and application of LME/ICM/MPA knowledge and information tools.”
- Objective: To improve global ecosystem-based governance of Large Marine Ecosystems and their coasts by generating knowledge, building capacity, harnessing public and private partners, and supporting south-to south learning and north-to-south learning.
- \$2.5M

Global LME Governance: Deliverables

- 1. Global and regional network of partners to enhance ecosystem-based management and to provide support for the GEF-IW LME/ICM/MPA projects to address MPA needs and incorporate climate variability and change.
- 2. Synthesis and incorporation of knowledge into policy-making, capture of best LME governance practices, and development of new methods and tools
- 3. Capacity and partnership building through twinning and learning exchanges, workshops, and training among LMEs and similar initiatives (e.g., Seascapes).
- 4. Dissemination and outreach of GEF LME/ICM/MPA project achievements and lessons learned.

Global LME Governance: Partners

- UNDP
- UNESCO-IOC
- U.S. NOAA
- World Wildlife Fund
- Conservation International
- International Union for the Conservation of Nature
- International Council for Exploration of the Seas

Global LME Governance: Activities

- Database of GEF LME, MPA and ICM projects
- Establishment of functioning regional networks
- Technical working groups to design/specify toolboxes
- Tools for broad ecosystem-based management from ridge-to-reef.

Global LME Governance: Activities

- Governance Handbook for GEF LME/ICM/MPA projects
- Working group on Data and Information Management
- twinning and learning exchanges
- six training sessions held, regionally distributed, to include GEF LME, ICM, MPA, and Groundwater staff
- GEF and LME projects to participate in global policy discussion

GEF International Waters (IW) Focal Area:



Before 2007

Are GEF investments improving aquatic systems?

...No indicator-based reference data for these

...How may GEF IW prioritize its investments?



TWAP Full Sized Project (2013-15): Global Indicator-Based Assessment

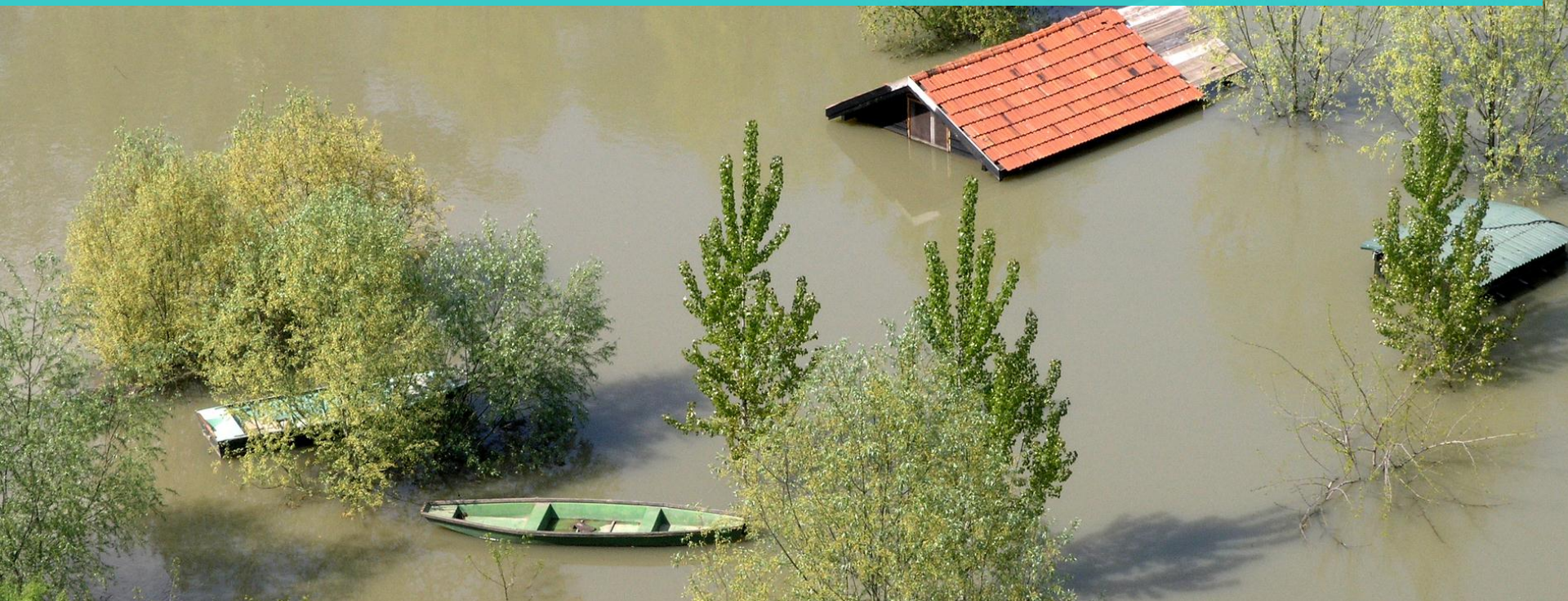


- 💧 Long-term goal: Promote financing of **indicator (results) - based** management and development of transboundary water systems
- 💧 Project objective:
 - (1) Conduct **first global assessment** to assist GEF and other donors to improve the setting of funding priorities;
 - (2) Formalize **partnerships with key institutions** aimed at incorporating transboundary considerations into regular assessment programs, & resulting in periodic assessments of transboundary water systems





Development of tools to incorporate impacts of climatic variability and change, in particular floods and drought, into basin planning processes





Project Goal

- The project aims at contributing to the global efforts being made to maintain acceptable levels of societal and ecosystem sustainability vis-a-vis growing climatic uncertainty and unpredictability.

Project Objective

- Improve the ability of land, water and urban area managers operating in transboundary river basins to recognize and address, as part of the TDA-SAP, IWRM plans and water safety plans processes, the implications of the increased frequency, magnitude and unpredictability of flood and drought events

Project outputs

- Developing a generic methodology for basins, which uses tools and decision support systems that integrate information on floods and droughts to:
 - Transboundary Diagnostic Analyses and Strategic Action Plans
 - IWRM and Water safety plans.
- Based on an assessment of present approaches, and developed through consultation with stakeholders



- Combination of learning and pilot transboundary basin



Other Portfolio Learning



- Blue Forests, Blue Carbon
- ABNJ Capacity Building
- Scaling-up Investments East Asian Seas





Thank you and please keep in touch



- What services of GEF IW:LEARN would be of benefit to the GEF portfolio?
- Are there other aspects that the project might be able to facilitate?
- What other partners should be on board?



EMAIL mish@iwlearn.org WEB: www.iwlearn.net