

# **AFRICAN REGIONAL WORKSHOP ON PUBLIC PARTICIPATION IN INTERNATIONAL WATERS MANAGEMENT**

**NOVEMBER 13-16/11/07  
MASERU-LESOTHO**



# LEGAL & INSTITUTIONAL FRAMEWORKS FOR PUBLIC & STAKEHOLDER INVOLVEMENT

## MOZAMBIQUE'S EXPERIENCE: ROVUMA BASIN (RRB) STAKEHOLDER COMMITTEE

PREPARED BY:

**Pascoal Mucache**  
**Northern Regional Water Administration (ARA-Norte)**  
[pasalmuca@yahoo.com.br](mailto:pasalmuca@yahoo.com.br)  
tel: +258 823045259 Fax: +258 27 220534

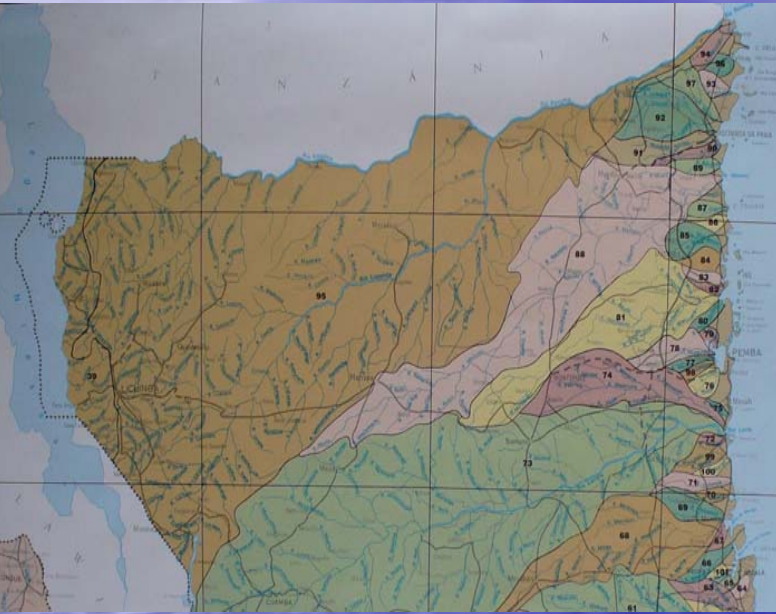
**Lily Nomboro**  
**National Directorate of Water (DNA)**  
[alnomboro@yahoo.com.au](mailto:alnomboro@yahoo.com.au)  
tel: +258 322191/2 Fax: +258 21305240/21305260



# Contents

- Geographic location of the Rovuma/Ruvuma Basin (RB)
- Rovuma initiative: SADC-Water division context with funds from AfDB
- Joint Water Commission (JWC) Moz./Tanzania
- Institutional capacity building support by InWEnt & GTZ (German Development Cooperation)
- ARA-Norte establishment (Catchment Agency)
- Phases of the Basin Committee establishment

# Geographic setting of the RRB

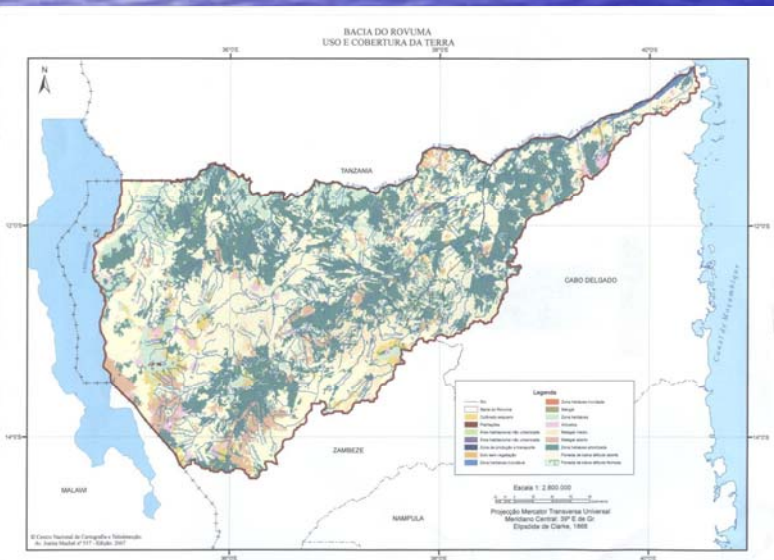


Forms boundary between Mozambique & Tanzania

Length: 650 km from the coast and has a total length of about 760 km

Area: 152200 km<sup>2</sup> – ( 65%) in Mozambique, (34%) Tanzania & (0.3%) Malawi

Population: 500,000 people



Hydrological characteristic: perennial rising from the headwaters of its main tributaries (Lucheringo, Likonde & Lugenda Rivers) in Mozambique, & from the Matagoro Mountains in south-eastern part of Tanzania

Mean annual runoff: 15km<sup>3</sup>

# Rovuma initiative: SADC context

- Promotion of public participation in water resource development and management is one of the programmes promoted by SADC Water Division (RSAP)

e.g. **Rovuma / Ruvuma Initiative**

- Capacity building for Joint Integrated Basin Management

Output 2007: Basin Issues Paper (BIP) with 2 national + 1 regional workshop



# Joint Water Commission (JWC)

The JWC for Rovuma/Ruvuma River Basin initiative that is being developed and financed within the auspices of Regional Strategic Action Plan (RSAP) Project 8 of SADC, to further promote these aspirations

# Ruvuma Basin Committee establishment

- Advise and financial support through the SADC-WD for implementing activities under the JWC (by InWEnt, GTZ)
- Advise and financial support to the national actors DNA (MZ) and DWA (TZ) in capacity building:
  - ARA-Norte in Mozambique: proceed with the establishment of a fully functional River Basin Organization and the Ruvuma Basin Committee
  - Ruvuma Basin Water Office in Tanzania (planned for 2008)

# ARA-Norte Establishment

Legal framework:

Water Law (1991) and

National Water Policy (1995),

revised & approved by the Ministry's Council (2007) are the guidance for Water Resources Management in Mozambique

- to establish autonomous regional water administrations (ARAs)
- to establish Basin Committees



# ARA-Norte establishment

The Water Policy defined the main policies:

- satisfaction of basic needs
- participation of the beneficiaries
- water prices to reflect the economic value of water
- regulation and monitoring of service providers
- principle of integrated water resources management
- water resources development plans for the major river basin and priority to reach agreements with other riparian States in shared river basins, decentralization of water resources management at the operational level to autonomous regional water administrations (ARAs)

# ARA-Norte establishment

- Role of ARA-Norte:
  - To manage of the 3 main rivers basins including the Rovuma, shared with Tanzania.
  - Consequently, for ARA-Norte are planned 3 River Basin Committees (RBCs), with the Rovuma Basin Committee the main RBC
  - Recently the government of Mozambique and Tanzania signed a Joint Water Commission Agreement (JWC)



# RBC establishment

- Aide Memoire was signed between ARA Norte and InWEnt with GTZ (Pemba, Jan 2007)
- Phases of RBC implementation in 2007:
  - Phase 1: Stakeholder Analysis (SA) (Mar-Apr, 2007)
  - Phase 2: Drafting Guidelines and Rules of Procedure for the functioning of the RBC (Apr-Oct, 2007)
  - Phase 3: Consultation process and selection of participants (stakeholder meetings:
    - Niassa (Jul 2007) and Cabo Delgado (Sep 2007)
  - Phase 4: Establishment of RBC (31 Oct 2007)
  - Phase 5: Design of a Capacity Building Programme for ARA Norte (planned for 2008....)



# Stakeholder analysis

		High	Medium	Low
Influence				
Interest	High	<ul style="list-style-type: none"> <li>• <b>ARA- Norte</b></li> <li>• <b>Provincial Government: Water Authority, Agriculture, Environment</b></li> <li>• <b>GWP Country Water Partnership (CWP-MZ)</b></li> <li>• <b>Farmers/peasants' Associations</b></li> <li><b>Traditional authorities</b></li> </ul>	<ul style="list-style-type: none"> <li>• Mining (Government provincial level)</li> <li>• Small scale miners</li> </ul>	
	Medium	Government (District): Fishery, Health  Private sector Associations  Research Institutions	IUCN, WWF  Major NGOs	
	Low			Provincial Govt.: Transport & Communication, Energy, & Commerce

# 15 Members of the RBC, by 31 Oct 2007

Sector	Institutions/Interest Groups
Gov (Provincial level): <b>Cabo Delgado + Niassa</b>	Agriculture , Irrigation
Gov (District level):	Municipality, Lichinga, Niassa Local Administration, Quionga CD Economic Activities Services, Nangade CD
Civil Society	NGOs Forum Traditional authority, Muembe, Niassa Traditional authority, Nangade CD
Tourism, Conservation Areas	Niassa Reserve (under lease management)
Industry, Commerce, Handicraft	Muhero, Majune, Niassa MLT, Lichinga
High Scale (important) Farmers	Fundacao Malonda, Niassa Tenga Ltd, Niassa
Medium, small scale Farmers	Farmers' Union (UCA), Niassa Farmers' Association, Ngapa CD
Rovuma Basin Management Unit -UGBR	





Rovuma / Ruvuma River




Consulting traditional authority in Quionga Village, Cabo-Delgado



Aquaculture: Mecula village, Niassa

Water supply provided by a NGO (Gender maintenance of the borehole)



- 
- Muito obrigado
  - Asante sana
  - Thank you
  - Merci beaucoup