



The ReefBase Newsletter provides registered users with updates on new additions to the ReefBase database and website. You have received this newsletter as you are a registered user of ReefBase and indicated that you wanted to receive our electronic newsletters.

To view / edit your ReefBase account or unsubscribe to this newsletter, please visit: <http://www.reefbase.org/account>

In this issue

Announcements

1. [New publication on Catchment Management and Coral Reef Conservation](#)
2. [SocMon Climate Change Guidelines complete](#)
3. [SocMonitor's April 2011 Newsletter release](#)
4. [First Coral Triangle Atlas Training](#)
5. [Coral Bleaching update](#)

ReefBase Publication Database

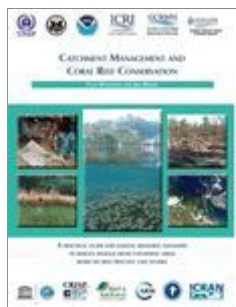
1. [Coral Reef Resilience Assessment of the Bonaire National Marine Park, Netherland Antilles](#)
2. [Mitigating Climate Change through Restoration and Management of Coastal Wetlands and Near-shore Marine Ecosystems: Challenges and Opportunities](#)
3. [Scientific Design of a Resilient Network of Marine Protected Areas : Lesser Sunda Ecoregion, Coral Triangle](#)
4. [Commonwealth Marine Environment Report Card South-West Marine Region](#)
5. [Discovering the Coastal and Marine Environment in West Africa](#)

Online GIS

1. [April 2011 NOAA Coral Reef Watch's Satellite Monitoring Products](#)

Announcements

1. New publication on Catchment management and coral reef conservation



Catchment Management and Coral Reef Conservation: A practical guide for coastal resource managers to reduce damage from catchment areas based on best practice case studies. By Clive Wilkinson and Jon Brodie was released at the International Marine Conservation Congress in Victoria BC Canada on 16 May.

The book aims to assist coastal resource managers deal with the problems arriving at the coast from rivers and streams. To date there has been no guide book for managers. The stimulus was that many coral reef managers reported on problems of sediment, nutrient, pesticide and litter pollution damaging their reefs and they did not know where

to start.

This 112 page book is an ideal training manual for catchment (watershed) management capacity building. It is based on 33 case studies of best practice catchment management from 70 authors and 22 countries from Brazil to Thailand. These case studies were used to develop 11 Major Recommendations in which there are 47 specific action suggestions. The case studies discuss how managers have tackled the major threats: sediments, nutrients, heavy metals, pesticides and litter; and also how to put climate change threats within this framework.

The suggestion for this book came from Dr. Veerle Vandeweerd who was the Director of the GPA office (Global Programme of Action for the Protection of the Marine Environment from Land-based Activities of UNEP (United Nations Environment Programme). Funding support came from ICRI members, especially from Department of State and National Atmospheric and Oceanographic Administration of the USA; UNEP; IUCN; ICRAN; IOC-UNESCO; and CRISP. Additional funding support came from James Cook University, Reef and Rainforest Research Centre (RRRC), Wildlife Conservation Society and the Townsville City Council.

This book is produced as a contribution to the International Coral Reef Initiative by the Global Coral Reef Monitoring Network and James Cook University Catchment to Reef Research Group, with the aim of conserving coral reefs for the future benefits of the world. Copies are free from the GCRMN or through some ICRI Partners around the world.

This publication can be downloaded from GCRMN website (<http://www.gcrmn.org>) and ReefBase website (<http://www.reefbase.org/redirect.aspx?urlid=50986>).

2. SocMon Climate Change Guidelines complete



The new guidelines, "Indicators to assess community-level social vulnerability to climate change" are meant to be an addendum to the existing regional SocMon/SEM-Pasifika guidelines which aim to improve site management of coastal and marine areas by providing simple, user-friendly guidelines on how to conduct a socioeconomic assessment. The purpose of this document is to provide a minimum set of socioeconomic indicators related to climate change. These can be included in a socioeconomic assessment of any site for which climate change impacts are an important issue. The resulting information can then inform coastal management needs and adaptive management. Funding for this publication was provided by the Secretariat for the Pacific Environment Programme through the Coral Reef Initiatives for the Pacific (CRISP) and IUCN. In-kind support was provided by The Nature Conservancy and the NOAA Coral Reef Conservation Program.

This publication is available for download at Socmon website:
http://www.socmon.org/publications.aspx#Pub_77320

3. SocMonitor's April 2011 newsletter is released

SocMonitor is an electronic bulletin about the Global Socio-economic Monitoring Initiative developed by Maria Pena and Christy Loper to update everyone on what is happening with socio-economic monitoring through the SocMon and SEM-Pasifika initiatives. The issues of the SocMonitor was available for access through SocMon website at <http://www.socmon.org>

The April 2011 issue of the SocMonitor has now been released and can be downloaded at http://www.socmon.org/publications.aspx#Pub_77284

This issue includes the following topics:

- Steady progress with SocMon South Asia project
- Keeping busy in Southeast Asia
- SEM-Pasifika Training held in Marshall Islands
- SocMon Climate Change guidelines complete

4. First Coral Triangle Atlas Training

The first Coral Triangle Atlas training will take place at the WorldFish Center in Penang, Malaysia from June 21st to June 23rd. The objective of the training is to build a strong Coral Triangle GIS team and to shape the CT Atlas to best serve the region. Participants invited at the workshops include government representatives from the six Coral Triangle countries, as well as staff from partner NGO's.

To find more detail on the Coral Triangle Atlas Project, please visit the website at <http://ctatlas.reefbase.org>

5. Coral Bleaching Update

- Western Indian Ocean Coral Bleaching Alerts

Full report alert for 15th April 2011 is available for download. Please click <http://www.cordioea.org/storage/wio-bleaching-alerts/2011/WIO%20bleaching%20alert%202011-04-15.pdf> to download the report. Further information on the bleaching alert at Western Indian Ocean region and to view previous bleaching reports, can be accessed at CORDIO WIO website; <http://www.cordioea.org/bleachingalert/>

ReefBase Publication Database

1. Coral Reef Resilience Assessment of the Bonaire National Marine Park, Netherland Antilles

- This report based on the IUCN Resilience Assessment of Coral Reefs highlights some of the threats that exist to Bonaire's coral reefs, and which could have serious implications for resilience to future climate change and other threats. The report identified recommendations for addressing the current threats, as well as high and low resilience sites. The threats and recommendations identified include:
 - Coastal development and artificial beaches.
 - Leaching from septic tanks.
 - Increasing damselfish populations.
 - Trididemnum and Lobophora.

IUCN. 2011. Coral Reef Resilience Assessment of the Bonaire National Marine Park, Netherlands Antilles. IUCN. Gland, Switzerland. 51pp.

http://www.reefbase.org/resource_center/publication/main.aspx?refid=77305&linksource=nl

2. Mitigating Climate Change through Restoration and Management of Coastal Wetlands and Near-shore Marine Ecosystems: Challenges and Opportunities

- This report to bring to light the important carbon sequestrations potential of coastal wetlands, and the significant and largely unaccounted or GHG emissions resulting from the disturbance, drainage, and conversion of the natural coastal carbon sinks for agriculture, tourism and other coastal development. The report consolidates information from the literature and provides analysis on the climate change mitigation potential of seagrasses and coastal wetlands, including coastal peats, tidal freshwater wetlands, salt marshes and mangroves.

Crooks, S., D. Herr, J. Tamelander, D. Laffoley, and J. Vandever. 2011. Mitigating Climate Change through Restoration and Management of Coastal Wetlands and Near-shore Marine Ecosystems: Challenges and Opportunities. Environment Department Paper 121, World Bank, Washington, DC.

http://www.reefbase.org/resource_center/publication/main.aspx?refid=77306&linksource=nl

3. Scientific Design of a Resilient Network of Marine Protected Areas : Lesser Sunda Ecoregion, Coral Triangle

- This document describe the process to develop a scientific design of a resilient network of MPAs for the Lesser Sunda Ecoregion, based on a detailed scientific assessment and an extensive stakeholder consultation process. This process included developing a GIS database of best available information, identifying key conservation features, threats and uses of the area, applying state of the art conservation planning tools and facilitating input from relevant government agencies, local stakeholders and scientific experts through a series of workshops and meetings.

Wilson, J., A. Darmawan, J. Subijanto, A. Green and S. Sheppard. 2011. Scientific design of a resilient network of marine protected areas. Lesser Sunda Ecoregion, Coral Triangle. Asia Pacific Marine Program. Report 2/11. 96 pp.

http://www.reefbase.org/resource_center/publication/main.aspx?refid=73227&linksource=nl

4. Discovering the Coastal and Marine Environment in West Africa

- This Knowledge Handbook is the first of a series of educational tools aimed at Environmental Education that PREE is making available to the academic and non-academic public to enhance knowledge and raise awareness of problems related to coastal and marine environment in the West African subregion. This booklet consists of four main chapters that present different natural sets, physical factors, flora and fauna and the influence Foreword of human activities on the sustainable management of natural resources.

PRCM. 2011. Discovering the Coastal and Marine Environment in West Africa – Knowledge Handbook. Regional Program of Environmental Education: IUCN Guinea-Bissau.

http://www.reefbase.org/resource_center/publication/main.aspx?refid=77328&linksource=nl

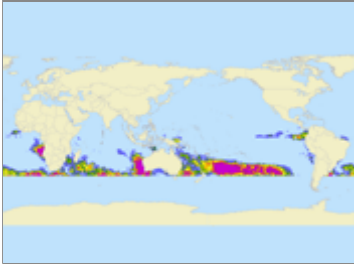
5. Overview of the Conservation Status of the Marine Fishes of the Mediterranean Sea

- This report reviews the conservation status of all native marine fishes occurring in the Mediterranean Sea, based on the assessments for 513 species and 6 subspecies using the IUCN's Red List methodology. It identifies those marine fish species that are threatened with extinction at the regional level so that appropriate conservation actions can be taken to improve their conservation status.

Abdul Malak, D. et al. 2011. Overview of the Conservation Status of the Marine Fishes of the Mediterranean Sea. Gland, Switzerland and Malaga, Spain: IUCN. vii + 61pp.

http://www.reefbase.org/resource_center/publication/main.aspx?refid=77329&linksource=nl

1. April 2011 NOAA Coral Reef Watch's Satellite Monitoring Products



This map shows the global observations of coral bleaching occurrences combined with NOAA Coral Reef Watch's satellite monitoring products including Sea Surface Temperature, Sea Surface Temperature Anomaly, Bleaching HotSpot and Degree Heating Weeks. These datasets are added into ReefBase Online GIS each month.

To view the latest April 2011 maps, click here.

<http://reefgis.reefbase.org/redirect.aspx?urlid=50987&linksource=nl>

ReefBase::A Global Information System For Coral Reefs

Website: <http://www.reefbase.org> Email: reefbase@cgiar.org