

BRIDGING DIVIDES FOR WATER

at the



5th WORLD WATER FORUM
ISTANBUL 2009

Notes for installing the IW:LEARN Website Toolkit on Windows (for ICT Workshop)

19-20 March 2009

Dr. Richard Cooper
(Regional Coordinator)
richard@iwlearn.org



GEF/UNEP International Waters Learning
Exchange and Resource Network



Installation guide

- ◆ The following guide shows how to install the IW:LEARN Toolkit on Windows*

- ◆ **Installation on Windows**
 - ◆ Download Plone-2.5.4 installer (this is version used in our online websites) from
 - ◆ <http://plone.org/products/plone/releases/2.5.4>, OR
 - ◆ workshop event page on IW:LEARN.NET
 - http://www.iwlearn.net/old_events/unep-iw-learn-it-workshop
 - ◆ Note: Vista users may need to disable the UAC security (see: http://www.petri.co.il/disable_uac_in_windows_vista.htm)
 - ◆ Download selected add-on products from event page
 - ◆ Download data.fs file from event page

- ◆ *for Mac, Linux and other systems see guidelines on www.plone.org and/or visit <http://plone.org/products/plone/releases/2.5.4>

 Search

- Home
- About
- Documentation
- Products
- Development
- Events
- Foundation
- Support

Log in Join

You are here: Home — Products — Plone — Releases — Plone 2.5.4

Mac, Linux downloads

Plone-2.5.4-zope-2.9.exe for Windows

Plone 2.5.4

▲ Up to Product page

A new minor release of Plone 2.5. Includes more reliable migrations, minor UI enhancements, as well as better performance for saving objects.

For additional information about this product please visit the project page.

Available downloads

- [Installer \(includes Zope 2.9 and Python 2.4\) for Windows 2000/XP/2003](#)
For Windows (21.1 MB)
- [Installer \(includes Zope 2.8\) for Windows 2000/XP/2003 \(only use this version if you already have a Zope 2.8.x-based site\)](#)
For Windows (17.8 MB)
- [Intel Installer \(Includes everything you need\)](#)
For Mac OS X (37 MB)
- [PowerPC Installer \(10.4 only - Includes everything you need\)](#)
For Mac OS X (38 MB)
- [Unified Installer - for Linux/BSD/Mac OS X/UNIX/FreeBSD/NetBSD/OpenBSD/illumos for you](#)
For Linux (32.5 MB)
- [Release Tarball](#)
For all platforms (9.9 MB)

- Commerce
- Layout and Presentation
- Auth and User Management
- Visual Themes
- Code Examples
- Weblogs
- Plone Releases
- Internationalization
- Communication
- Versioning, Staging and Deployment
- Polls/Surveys
- Plone
 - Releases
 - Plone 2.5.4
 - Roadmap
 - Features

Opening Plone-2.5.4-zope-2.9.exe

You have chosen to open **Plone-2.5.4-zope-2.9.exe** which is a: executable from: <https://launchpadlibrarian.net>

What should Firefox do with this file?

Open with wine (default)

Save to Disk

Do this automatically for files like this from now on.

Cancel OK

Release Notes

Users of Plone 2.5.x through version 2.5.4 should apply Plone Hotfix 20071106-2

Tested with Plone 2.5

Time zone: GMT +2 for the entire country (seven hours ahead of U.S. Eastern Standard Time).

Electricity: 220 volts AC throughout Turkey

Transportation in Istanbul

Buses will be operating between the congress centres and hotels, as well as between the airport and the hotels, on a regular basis and throughout the week.

Mornings, 07.00 – 10.00, evenings, 17.00 – 20.00, every 30 minutes, and from 10.00 to 17.00 every one hour, buses will be providing the transportation, as the ferry boats will be within the same timing schedule.

Ferry boat transportation will enable passengers to travel from/to Kadıköy, Yenikapı, Kabataş to/from the two ports of the venue, Sütlüce and Feshane, while at the same time continuous ferry services will be available as well.

[Click here for more information on transport](#)



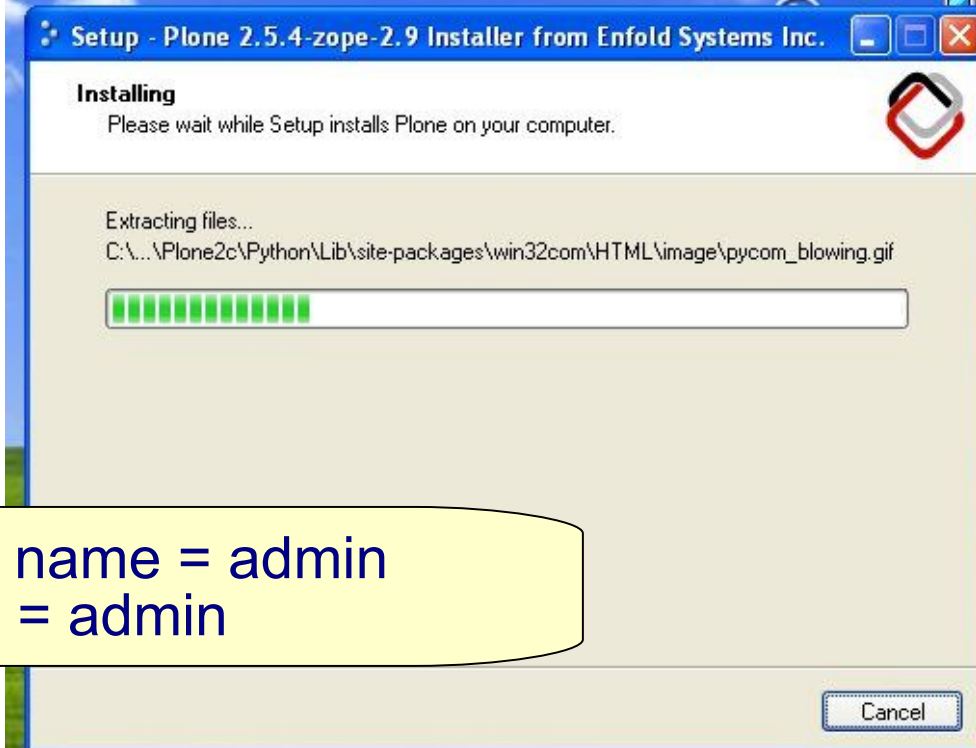
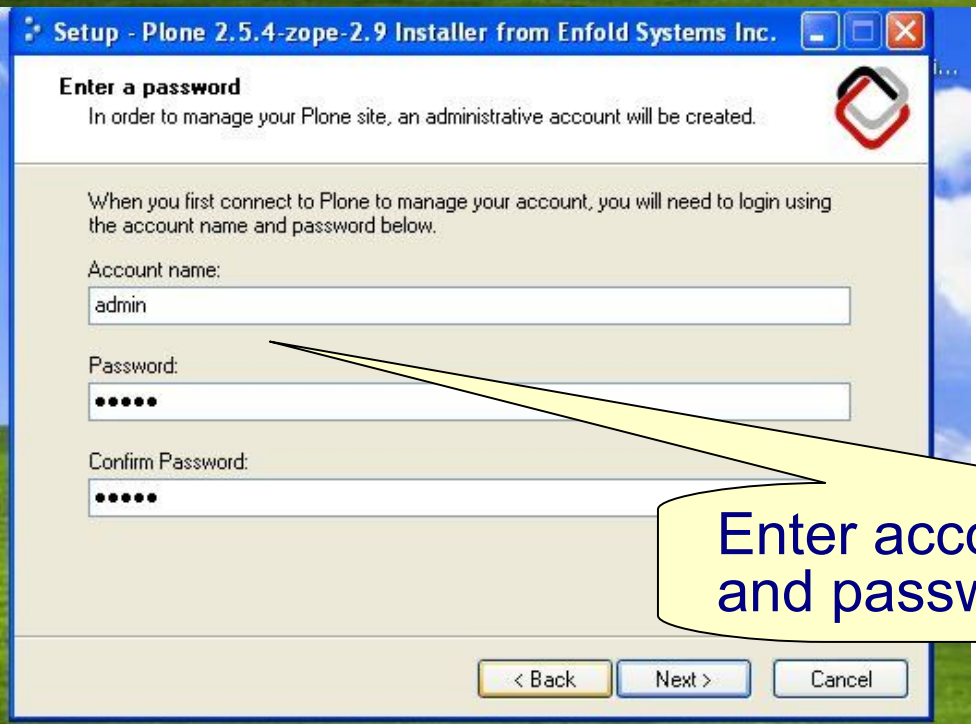
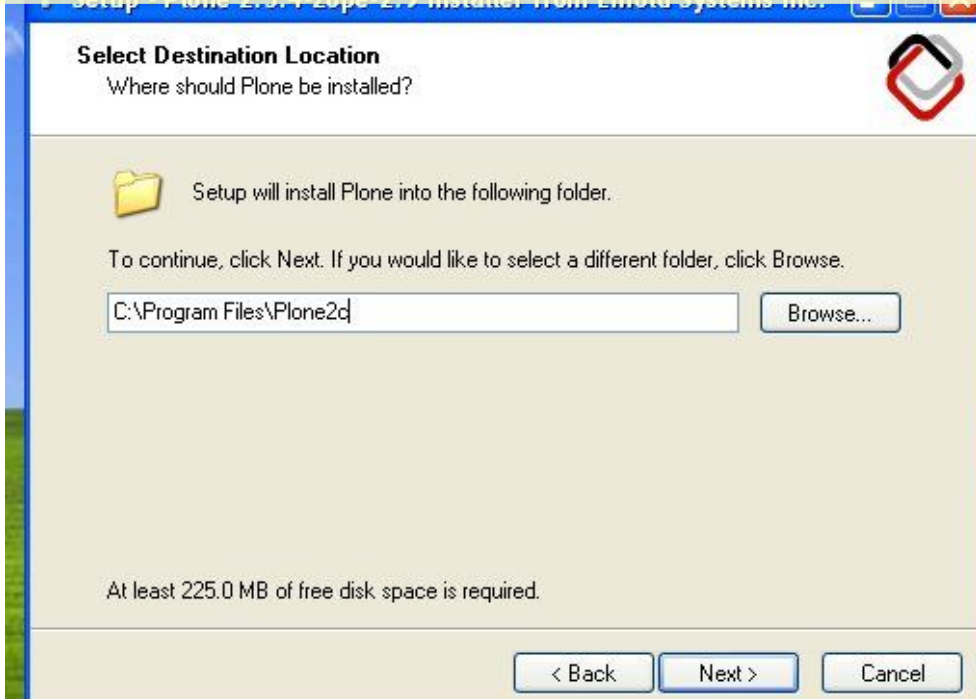
Download:

1. Plone installer for Windows
2. Plone add-on products, and
3. data.fs

Related content

- [Data.fs needed for installing Website Toolkit](#)
- [Selected Plone add-on products](#)
- [Plone installation file for Windows](#)
- [Installing Plone on Vista \(UAC feature\)](#)
- [Plone 2.5 User Guide](#)
- [Definitive Guide to Plone](#)
- [Examples of Plone sites around the world](#)
- [learnplone.org help for Plone users](#)
- [Plone user guides from the University of Leicester, UK](#)

Installation: double click on downloaded .exe file



Enter account name = admin
and password = admin

Installation: click on 'Start Plone'

The image shows a Windows XP Professional desktop with the Start menu open. The Start menu is expanded to show the 'Plone' folder, which is highlighted. A yellow callout bubble points to the 'Plone' folder in the Start menu, containing the text: 'Start' menu > Plone > Plone > 'Start Plone' button. In the background, the 'Plone Controller - [Plone Status]' window is visible, showing a 'Start Plone' button and the status 'Plone is not running'. The desktop also shows the Explorer window with 'Set Program Access and Defaults', 'Windows Catalog', and 'Windows Update' options.

Windows XP Professional

Start menu items:

- Set Program Access and Defaults
- Windows Catalog
- Windows Update
- Programs
- Documents
- Settings
- Search
- Help and Support
- Run...
- Log Off richard...
- Turn Off Computer...

Start menu sub-items (under Programs):

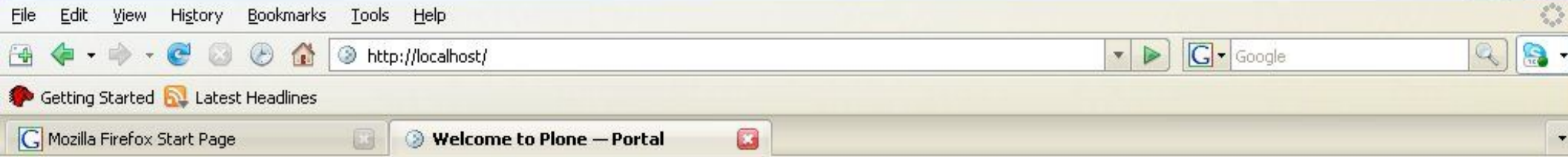
- Accessories
- Games
- Startup
- avast! Antivirus
- Microsoft Office
- NASA
- ESRI
- Administrative Tools
- 7-Zip
- OpenOffice.org 2.3
- Skype
- Plone
- GIMP

Plone Controller - [Plone Status] window:

- Status: Start Plone (Plone is not running)
- Site Management: View Plone, Zope Management Interface...

Callout bubble text: 'Start' menu > Plone > Plone > 'Start Plone' button

Installation: click on 'View Plone' in 'Plone Controller' window



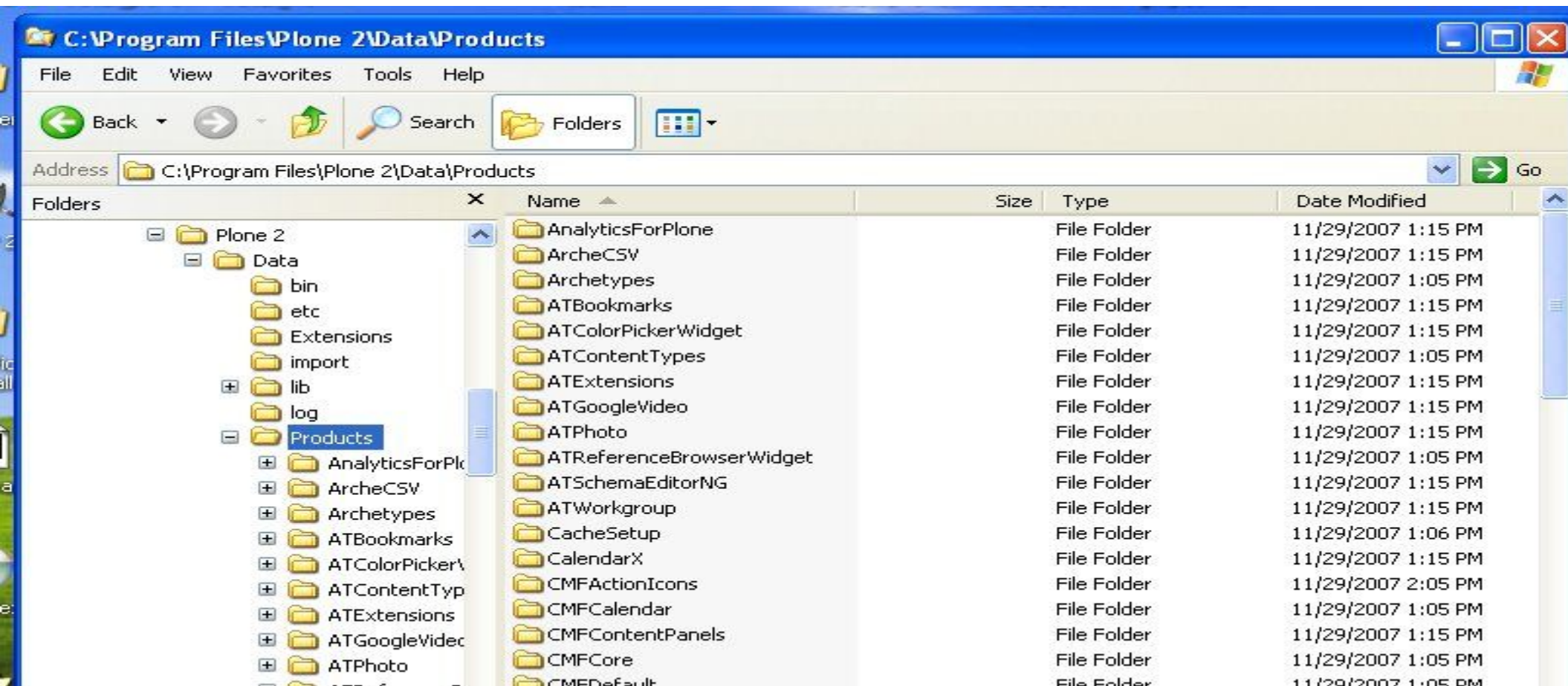
1. Click 'View Plone' to open browser at **http://localhost/**

(Now you need to install data.fs and the Plone products (next page))

A screenshot of the 'Plone Controller - [Plone Status]' window. The window has a blue title bar and a menu with 'Plone', 'Ports', 'Status', 'Emergency User', and 'About'. The main content area is divided into 'Status' and 'Site Management' sections. In the 'Status' section, there is a 'Stop Plone' button and the text 'Plone is running'. In the 'Site Management' section, there are two buttons: 'View Plone...' and 'Zope Management Interface...'. The 'View Plone...' button is highlighted with a yellow circle. The background shows the 'Welcome to Plone' page with a 'Get Started' section containing a list of instructions.

Installation: add-on products

- ◆ **Stop Plone** (click on 'Stop Plone' in 'Plone Controller' window – see previous slide)
- ◆ Copy & paste downloaded add-on product directories to
C:\Program Files\Plone 2\Data\Products\
(select yes to overwrite existing contents)



Installation: data.fs

- ◆ Copy the downloaded data.fs file and **replace** existing data.fs file located at C:\Program Files\Plone 2\Data\var
- ◆ **Restart Plone**
- ◆ Open your browser at <http://localhost/toolkit>
- ◆ Login with username / password - admin / admin
 - ◆ the admin account gives you full manager access to your website
 - ◆ you can also log into your underlying *Zope interface using the same username and password (admin / admin)

- ◆ *Plone websites run on top of a Zope server, with access to the latter required for more advanced development, especially design work.